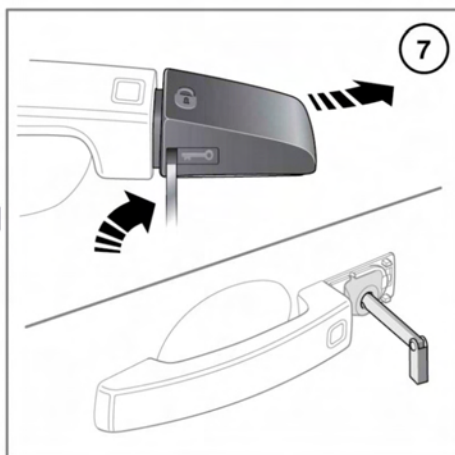
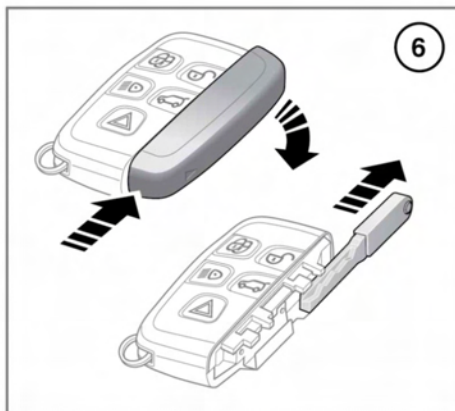
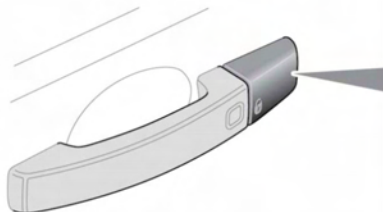
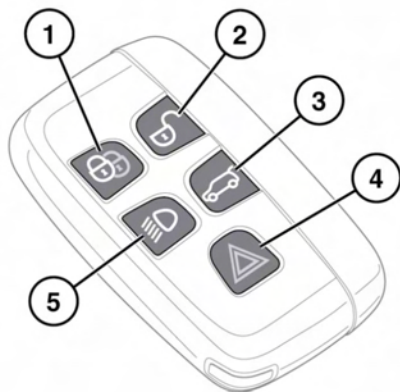


# Entering the vehicle

## UNLOCKING THE VEHICLE



**To prevent accidental operation, never leave the Smart key in the vehicle, if children or animals are also left in the vehicle.**

**Note:** The operational range of the Smart key will vary considerably depending on atmospheric conditions and interference from other transmitting devices.

**Note:** If any door or the tailgate is unlocked 10 times within a short period, the latch is disabled for approximately 1 minute.

The vehicle is supplied with 2 Smart keys. The Smart keys act as remote controls for the locking and alarm system, and allow the vehicle to be locked, unlocked, and driven without the use of a conventional key. See **6, KEYLESS ENTRY, 11, KEYLESS LOCKING** and **89, STARTING THE ENGINE**.

## 1. Lock:

- Press once to Single lock the vehicle. All of the doors and the tailgate will lock (but can still be unlocked from inside) and the Perimeter alarm will arm. See **9, SINGLE LOCKING**.
- Press twice (within 3 seconds) to Double lock the vehicle. All of the doors and the tailgate will lock (and cannot be unlocked from inside the vehicle), and both the Perimeter alarm and Interior protection will be armed. See **9, DOUBLE LOCKING**.

See also **10, GLOBAL CLOSING**.

## 2. Your vehicle can be unlocked using either Single or Multi-point entry.

- Single-point entry: The first press unlocks the driver's door and enables the other doors to be opened from the inside. The hazard warning lamps will flash twice to indicate that the vehicle is unlocked and the alarm has been disarmed. A second press unlocks the passenger doors and the tailgate.
- Multi-point entry: Press briefly to unlock all of the doors and the tailgate, and to disarm the alarm. The hazard warning lamps will flash twice to indicate that the vehicle is unlocked and the alarm has been disarmed.

To change from Single to Multi-point entry (or vice versa), press both the lock and unlock buttons simultaneously for 3 seconds. The hazard warning lamps will flash twice to confirm the change.

**Note:** *If a door or the tailgate are not opened within 1 minute of unlocking the vehicle, the doors will lock again automatically.*

## 3. Tailgate release:

- Press briefly to release the tailgate. The vehicle's security system will remain active while the tailgate is open, but intrusion and inclination sensing systems will be disabled.

On closing the tailgate, the hazard warning lamps will flash after a few seconds, to confirm that the Full alarm system has been reactivated (if previously armed). Also see **7, OPENING AND CLOSING THE TAILGATE**.

## 4. Panic alarm:

- Press and hold for 3 seconds (or press 3 times within 3 seconds) to activate the horn and the hazard lamps.

**Note:** *The horn and hazard lamps will switch off automatically after 2 minutes and 45 seconds.*

- Once active for more than 5 seconds, the alarm can be cancelled by pressing the button and holding for 3 seconds (or pressing 3 times within 3 seconds).
- The emergency alarm will also be cancelled if a valid Smart key is present when the START/STOP button is pressed.

## 5. Approach lighting: