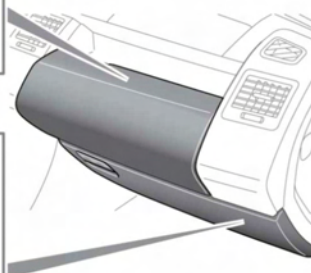
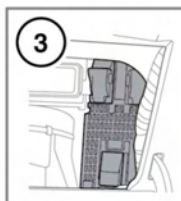
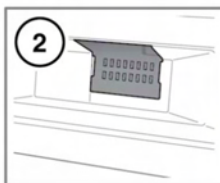
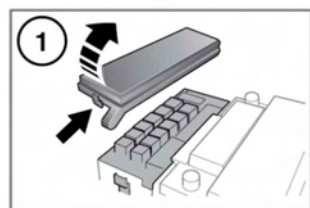


FUSE BOX LOCATIONS



E156592

1. Engine compartment fuse box.
2. Upper passenger compartment fuse box.
3. Lower passenger compartment fuse box.

To access the upper passenger compartment fuse box, open the upper glove box and remove the access panel at the back of the glove box.

A label on the rear of the access panel shows the circuits protected and the fuse locations.

To access the lower passenger compartment fuse box, open the lower glove box, pinch the top of the support stays and lower the glove box into the footwell.

A label on the rear of the glove box shows the circuits protected and the fuse locations.

The engine compartment fuse numbers and positions are shown on the inside of the fuse box cover.

CHANGING A FUSE



Fit Land Rover approved replacement fuses of the same rating and type, or fuses of a matching specification. Using an incorrect fuse, may result in damage to the vehicle's electrical system and can result in a fire.



If the replacement fuse blows after installation, the system should be checked by your Dealer/Authorised Repairer.

Note: Land Rover recommend that relays should only be replaced by qualified persons.

Always switch off the ignition, and the affected electrical circuit, before replacing a fuse.