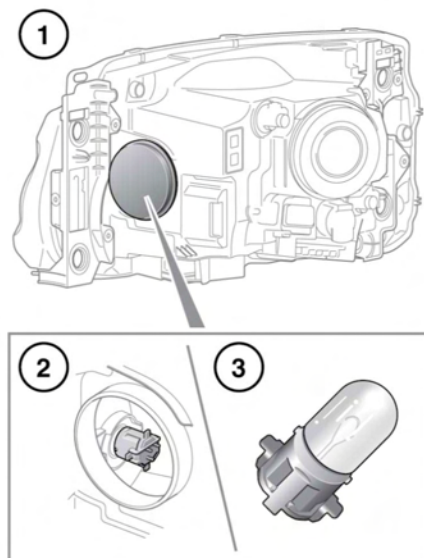


⚠ Take care not to touch this type of bulb with your fingers; always use a cloth to handle them. If necessary, clean the bulb with methylated spirits to remove fingerprints.

3. Release the 2 clips and remove the electrical connector.
4. Insert the new bulb and repeat the above procedure in reverse order.

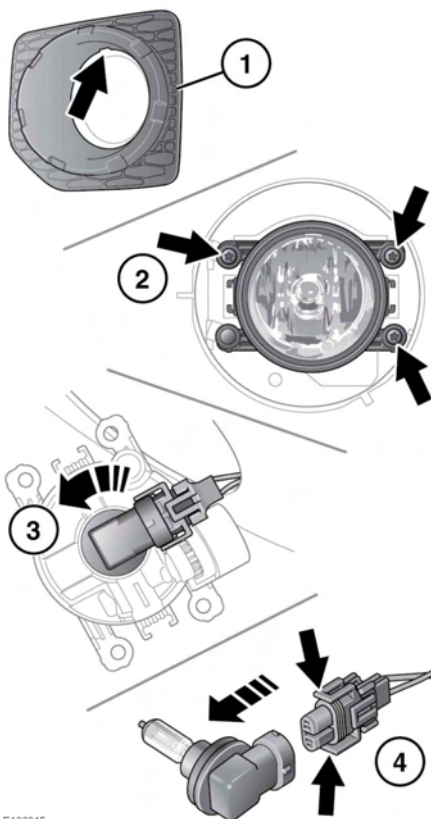
SIDE LAMP BULB REPLACEMENT



E156704

1. Twist and lift off the domed cap.
2. Pull off the electrical connector and remove the bulb assembly.
3. Push and twist to remove the bulb.

FRONT FOG LAMP BULB REPLACEMENT



E136815

1. Using the slot at the top of the lamp surround, lever out with a suitable implement to remove.
2. Undo the retaining screws, and remove the lamp unit.
3. Rotate the bulb holder anticlockwise, and remove it from the lamp unit.
4. Press the 2 clips together, and remove the electrical connector.