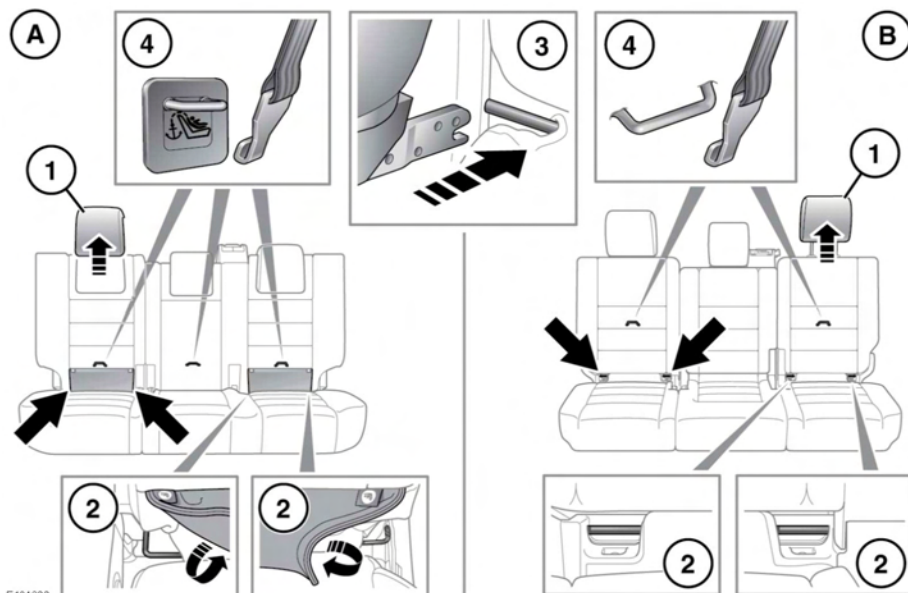


## ISOFIX ANCHOR POINTS



**A.** 5 seat vehicles.

**B.** 7 seat vehicles.

Both of the outer seat positions on the second row seats are equipped to accept ISOFIX restraints.



This symbol is shown on a label sewn into the seats, to indicate the position of the ISOFIX lower anchorages.

### To install an ISOFIX child seat:

1. Raise or remove the head restraint.
2. Lift the velcro flap to expose the ISOFIX locking mechanism.
3. Slide the child seat into the locking mechanism.

4. Upper tether anchorage points are provided at the back of the seats, if required, see **33**, **INSTALLING TETHER ANCHORAGE CHILD RESTRAINTS**.

**Note:** Always make sure that if an upper tether is provided, it is fitted and tightened correctly.

**Note:** ISOFIX child restraints are only fitted to the second row of seats.

Test the security of the child restraint. To do this, attempt to pull the restraint away from the vehicle seat and twist the restraint from side to side. Even if the restraint appears secure, you should still check the anchor points visually, to confirm correct attachment.