

Standard audio system

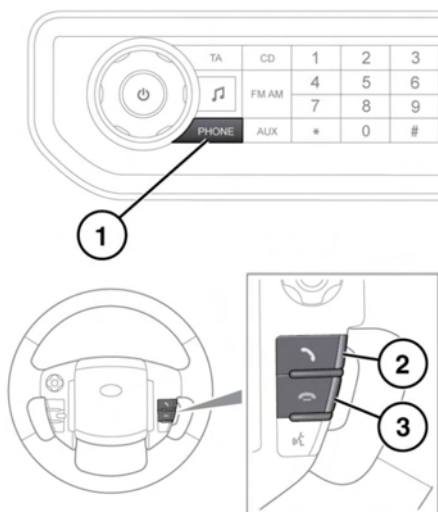
2. Using the mobile phone, search for **Bluetooth®** devices. On some phones, this is referred to as a new paired device. See your phone's operating instructions for further information.
3. When the vehicle's **Bluetooth®** system is discovered (named Land Rover), select this device from the list.
4. When prompted, enter the **Bluetooth®** Personal Identification Number (PIN) into the mobile phone. This four digit number is randomly generated by the vehicle's system and will be displayed on the screen.
5. Once your phone is paired and docked to the system, it can dock automatically. If it does not automatically dock, you will have to dock manually with the Land Rover Bluetooth system, via the mobile phone. Please consult the mobile phone's instructions for further information.

Note: Some mobile phones do not automatically dock and will require to be manually docked. Some mobile phones require you to authorise the connection each time you start the system. To change this, you must set Land Rover as being authorised in the mobile phone's known device list. Please consult the mobile phone's instructions for further information.

OPERATING THE PHONE

Each time the ignition is switched on, the system will attempt to connect with the last connected phone.

As mobile phones have a wide range of audio and echo characteristics, it may take a few seconds for the vehicle's system to adapt and deliver optimum audio performance. To achieve this, it may be necessary to reduce the in-vehicle volume and ventilation fan speed slightly. The same then applies when using the hands-free system.



E136649

1. Press to activate or deactivate the telephone menu.
2. Press to answer a call or to dial a number.
3. Press to end a call or to reject an incoming call.

Answering, rejecting or ending a call:

- Press the **PHONE** button (1) or the steering wheel control (2) to answer an incoming call.
- To reject or end a call, press the **PHONE** button or the appropriate steering wheel control (3).

Dialling:

- With **PHONE** selected, use the numeric keypad to enter a telephone number.
- Press **OK** on the audio control panel or the steering wheel phone control (2) to dial the number.

Call volume:

The phone call volume is operated by the Audio system's volume control.