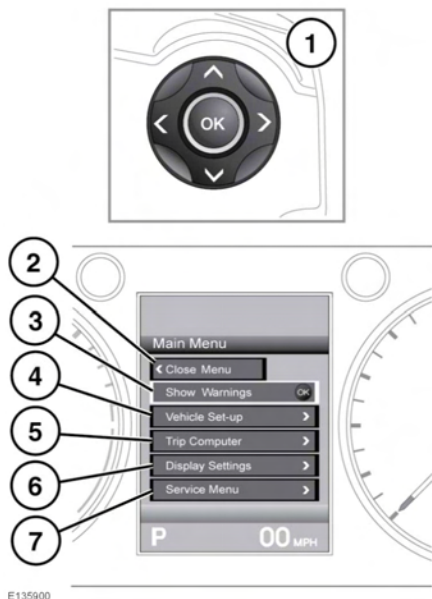


INSTRUMENT PANEL MENU



A number of vehicle features and display settings may be configured via the Instrument panel menu.

To display and navigate through the Instrument panel menu, operate the menu control on the steering wheel.

1. Steering wheel menu control: Press any of the controls to activate the menu, then use as follows:
Press the up/down arrows to scroll up or down the list.
Press the right arrow to view a sub-list.
Press the left arrow to return to the previous menu.
Press the **OK** button to select the highlighted item from a list.
2. Select to close and return to the Main Menu.
3. Select to access any warning messages.

4. Select to access the Vehicle Set-up menu.
5. Select to access the Trip Computer menu.
6. Select to access the instrument display menu.
7. Select to access the vehicle's Service Menu.

WARNING AND INFORMATION MESSAGES



Do not ignore warning messages, take appropriate action as soon as possible. Failure to do so may result in serious damage to the vehicle.



If the message is suppressed, an amber or red warning icon will remain illuminated until the cause of the message is rectified.

For information regarding the individual messages, their meanings, and any action required, please refer to the relevant section within this handbook.

If more than one message is active, each is displayed in turn for 2 seconds, in order of priority.

Note: Messages are displayed in order of importance, with critical warning messages being of the highest priority.

Warning messages may be accompanied by an audible warning, and the message text may have the handbook symbol next to it. Warning messages are displayed until the condition causing the fault is rectified or the message is suppressed using the **OK** button on the steering wheel. If the message is suppressed, a warning icon will remain illuminated until the cause of the message is rectified.