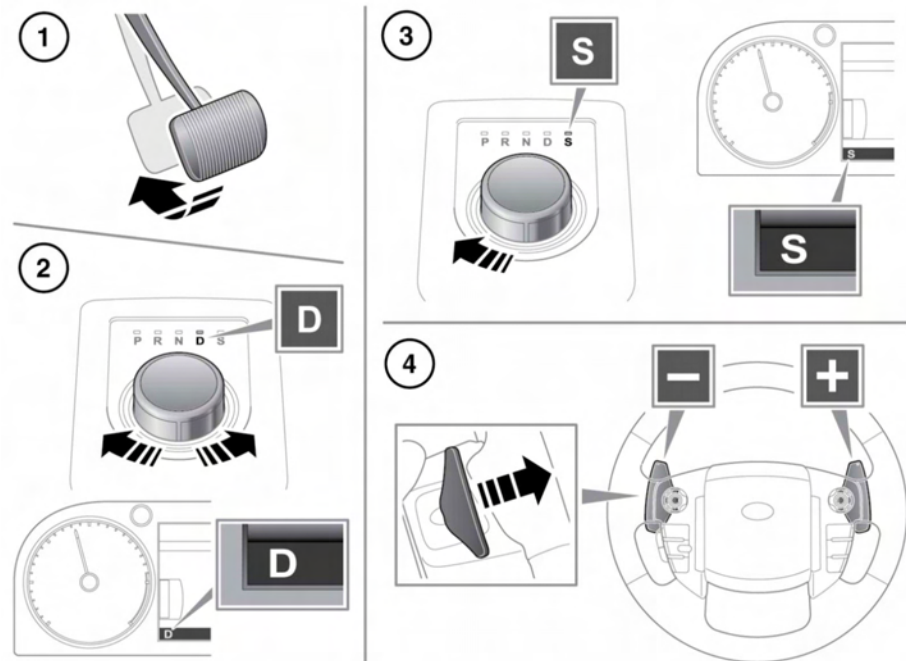


## AUTOMATIC TRANSMISSION

The rotary gear selector rotates in either direction. When the engine is started, the rotary gear selector will elevate out of the centre console in readiness for gear selection.



1. To select Drive (**D**) when the vehicle is stationary, first apply the brake pedal.
2. With the rotary gear selector, rotate to Drive (**D**). The paddle shifts can be used in this mode (this feature is not operational in all markets).

**Note:** Gear selection will revert to fully automatic if use of the paddles is not maintained.

To manually return to fully automatic **D** mode, pull and hold the right paddle for 2 seconds.

3. Press the selector down and rotate to **S** to select Sport mode. **S** will appear in the Instrument panel and the LED, by the selector, will illuminate.
4. Manual gear selection (CommandShift™) can be used when Sport (**S**) is selected.