



## IMPORTANT INFORMATION

 **Do not rest your foot on the brake pedal while the vehicle is in motion.**

 **Never allow the vehicle to coast (freewheel) with the engine turned off. The engine must be running to provide full braking assistance. The brakes will still function with the engine off, but far more pressure will be required to operate them.**

 **If the red brake warning lamp illuminates, safely bring the vehicle to a stop, as quickly as possible, and seek qualified assistance.**

 **Never place non-approved floor matting or any other obstructions under the brake pedal. This restricts pedal travel and braking efficiency.**

Driving through heavy rain or water can have an adverse effect on braking efficiency. Under such circumstances, it is recommended that you lightly apply the brakes intermittently, to dry the brakes.

## STEEP SLOPES

If the vehicle is stationary on a steep, slippery slope, it may begin to slide, even with the brakes applied. This is because, without wheel rotation, the Anti-lock Braking System (ABS) cannot determine vehicle movement.

To counteract this, briefly release the brakes to allow some wheel rotation and then re-apply the brakes to allow the ABS to gain control.

## EMERGENCY BRAKE ASSIST (EBA)

If the driver rapidly applies the brakes, EBA automatically boosts the braking force to its maximum, in order to bring the vehicle to a halt as quickly as possible. If the driver applies the brakes slowly, but conditions mean that the Anti-lock Braking System (ABS) operates on the front wheels, EBA will increase the braking force in order to apply ABS control to the rear wheels.

EBA stops operating as soon as the brake pedal is released.

A fault with the EBA system is indicated by the brake warning lamp (see **44, BRAKE (AMBER)**) illuminating and an associated warning message. Drive with care, avoiding heavy brake application and seek qualified assistance.


## ELECTRONIC BRAKE FORCE DISTRIBUTION (EBD)

EBD controls the balance of braking forces supplied to the front and rear wheels, in order to maintain maximum braking efficiency.

If the vehicle has a light load (only the driver in the vehicle, for example), EBD will reduce the braking force applied to the rear wheels. If the vehicle is heavily laden, EBD will allow greater braking force to the rear wheels.

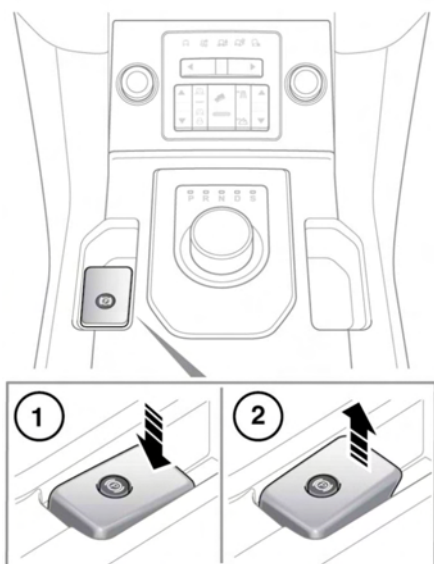
A fault with the EBD system is indicated by the brake warning lamp (see **43, BRAKE (RED)**) illuminating and an associated warning message. Gently and safely stop the vehicle and seek qualified assistance.

## ELECTRIC PARKING BRAKE (EPB)

 The Electric Parking Brake (EPB) operates on the rear wheels; therefore, secure parking of the vehicle is dependent on being on a hard and stable surface.

**!** Do not rely on the EPB to operate effectively, if the rear wheels have been immersed in mud or water.

**Note:** If the vehicle is used in severe off-road conditions (e.g., wading, deep mud, etc.), additional maintenance and adjustment of the EPB will be required. Consult a Dealer/Authorised Repairer.



E 158 190

The switch which operates the EPB is mounted on the centre console, to the side of the gear selector.

**To disengage the EPB (1):** With the ignition system on, or with the engine running, apply the brake pedal and press the EPB switch down.

If the EPB is applied while the vehicle is stationary and Drive (D) or Reverse (R) is selected, applying the throttle will automatically release the EPB.

The EPB is also automatically released when the gear selector is moved from the Park (P) position.

If the EPB is inadvertently applied when the vehicle is moving at above 3 km/h (1.8 mph), **Caution! Park Brake Applied** is displayed in the Message centre, the warning lamp in the Instrument panel will illuminate and a warning chime will sound.

If the EPB is applied while the vehicle is moving, releasing the switch will disengage the EPB. The EPB cannot be applied when the vehicle is moving, if the accelerator pedal is pressed.

**Note:** If the vehicle is in motion, the EPB should only be used as an emergency brake.

**!** Always apply the EPB when the vehicle is parked.

**To engage the EPB (2):** Pull the EPB switch upwards and release. The switch will return to the neutral position.

The EPB warning lamp in the Instrument panel will illuminate. See **43, PARKING BRAKE (RED)**.

The Drive-away release feature allows the EPB to release automatically as the vehicle is driven away.

The warning lamp in the Instrument panel will remain on for a short time, if the EPB is applied when the ignition system is reverted to the Convenience mode.

If a fault in the system is detected, **Park Brake Fault** or **Cannot Apply Park Brake** will be displayed in the Message centre. Seek qualified assistance as soon as possible.

If the battery has been discharged or disconnected, **Apply Foot And Park Brake** will be displayed in the Message centre when the ignition is next switched on. Press the brake pedal and pull the EPB switch up to apply the EPB. This is required to reset the EPB system. The EPB will now function correctly.