

- Touch and hold to scan backwards through the current track. Playback will resume when the soft key is released.

PORTABLE MEDIA CONNECTIONS

Portable media devices can be connected to the media hub, located in the upper glove box. Rear seat passengers can connect at the rear of the centre console. Compatible portable devices include:

- USB mass storage devices (e.g., a memory stick). Devices must use FAT or FAT32 file format.
- iPod (iPod Classic, iPod Touch, iPhone and iPod Nano are supported - full functionality for older devices cannot be guaranteed). iPod Shuffle functionality cannot be guaranteed.
- Auxiliary device (personal audio, MP3 players, all iPods).

Note: Auxiliary devices have no Touch screen control.

If you are connecting an iPod, mass storage or **Bluetooth**® wireless technology device, use the Touch screen to operate and search the device. Many of the controls are similar to those available for CD play.



Please disconnect your iPod when leaving the vehicle. Failure to do so may result in the iPod battery discharging.

Note: The Audio system will play MP3, WMA, and AAC files.

To maximise playback quality, it is recommended that lossless compression is used for any media files on USB or iPod. Failing this, it is recommended that compressed files utilise a minimum bitrate of 192 kb/s (a higher bitrate is strongly recommended).

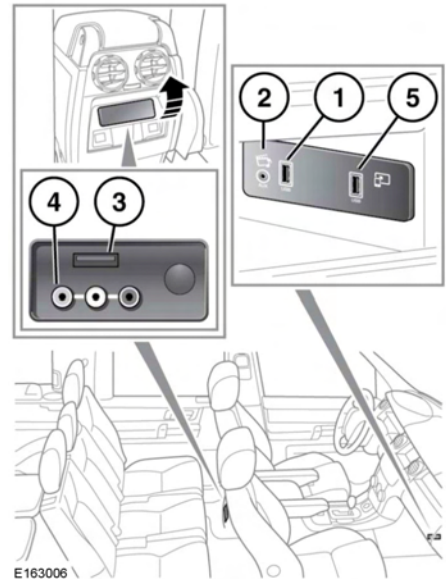
Note: iPod is a trademark of Apple Computer Inc., registered in the US and other countries.

Note: Some MP3 players have their own file system that is not supported by this system. To use your MP3 player, you must set it to USB Removable Device or Mass Storage Device mode. Only music that has been added to the device in this mode can be played.

For a list of compatible **Bluetooth**® wireless technology devices, please refer to the Land Rover website at: www.landrover.com.

The **Bluetooth**® wireless technology devices listed have been tested for compatibility with Land Rover vehicles. Performance will vary, based on the device's software version and battery condition. Devices are warranted by their manufacturer, not Land Rover.

CONNECTING A DEVICE





Read the manufacturer's instructions for any device, before it is connected to the Audio system. Make sure the device is suitable, and comply with any instructions regarding connection and operation. Failure to do so may result in damage to the vehicle's Audio system or the auxiliary device.

Connect the device into the appropriate socket.

1. USB socket.
2. 3.5 mm AUX socket.
3. Rear media USB.
4. Rear media AV sockets.
5. For InControl Apps use only.



Do not plug non-audio devices into the USB port.

Note: Use the cable supplied with your media device to connect to the USB socket.

Note: A USB hub cannot be used to connect more than 1 USB device to the audio unit.

Note: Devices connected to the USB ports will be charged, but devices that are fully discharged will not play.

Note: In some cases, if an iPhone is connected via a USB cable for music and also to a **Bluetooth®** wireless technology device for other phone functions, the Audio will stream through only the last connected port. For example, if a **Bluetooth®** wireless technology device is the last connection made to the iPhone and the iPod lead is connected, no audio will be heard through the speakers via the iPod lead. Track title and time information will still be shown on the display. Audio output from the speakers will only be obtained if the user chooses Audio mode on the **Bluetooth®** wireless technology device. To address this issue, disconnect and reconnect your device's USB cable, or open the iPod application on the iPhone, select the **Bluetooth®** icon and select Dock Connector on the pop-up.

When an iPod is connected, playback will continue from the point at which it was last playing, provided the iPod battery is in a good state of charge.

Note: Options, such as **Repeat** and **Mix**, relate to the device currently playing; they will not apply to any subsequent device.

The 3.5mm AUX socket allows extra equipment (e.g., personal stereos MP3 player, hand-held navigation unit, etc.) to be connected to the Audio system.

Note: iPod shuffle may be connected via the AUX socket.

Note: On vehicles fitted with Rear Seat Entertainment (RSE), extra Audio/Visual sockets are provided. This allows auxiliary equipment (such as a video game console) to be linked to the rear DVD screens. For installation information, please refer to the manufacturer's instructions.