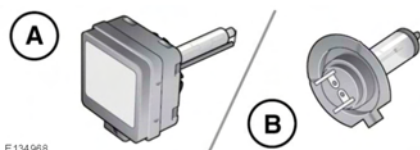


Note: Place face down on a flat surface covered in a soft material, to prevent damage to the units lens.

6. To access the direction indicator, the headlamp unit locking slide assembly must be completely removed from the unit. To remove the slide assembly, remove the four screws (as illustrated). When refitting the slide, do not over-tighten the screws.

Note: Refitting the headlamp unit is the reverse of removal.

HEADLAMP BULB IDENTIFICATION






- A. Xenon bulb.
- B. Halogen bulb.

HALOGEN BULBS

Take care not to touch the glass part of the bulb with your fingers; always use a cloth to handle the bulb. If necessary, use methylated spirits to remove finger prints.

XENON LAMPS

-  **Replacement or maintenance of xenon lamps should only be carried out by suitably qualified personnel.**
-  **High voltage is required to ignite the gas and metal vapour which are used to power xenon lamps. Contact with this voltage can cause serious injury.**
-  **Xenon lamp units operate at a very high temperature. Make sure that the lamp units have cooled before attempting to touch them.**

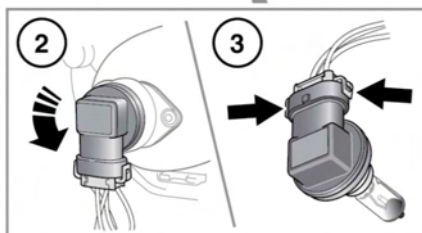
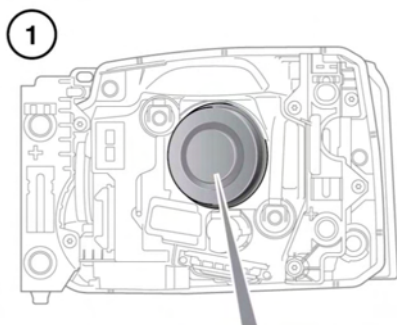


Xenon lamp units contain mercury, which is highly toxic and can be extremely harmful.



Seek advice about the correct disposal of xenon lamp units from a Dealer/Authorised Repairer, or your local authority.

HEADLAMP BULB REPLACEMENT



E156712

Release the headlamp to gain access. See **196, HEADLAMP REMOVAL.**

1. At the back of the headlamp unit, remove the cover. Twist and lift off.
2. Rotate the bulb holder anticlockwise and release it from the lamp.