

Starting the engine

1. Make sure the brake pedal is not depressed and that a valid Smart key is inside the vehicle.
2. Press and hold the engine **START/STOP** button until the warning lamps illuminate.
3. Release the engine **START/STOP** button.



If the brake pedal is applied when the engine **START/STOP** button is pressed, the engine will start.

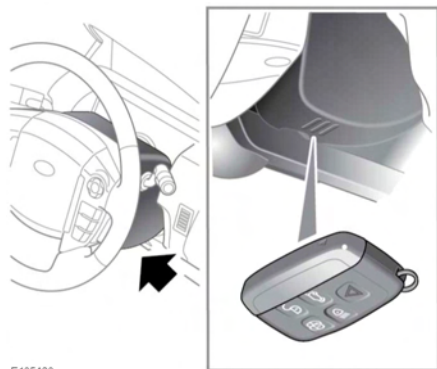
ROLLING RE-START

A rolling restart can be initiated by selecting Neutral (N) and pressing the engine **START/STOP** button.

KEYLESS START BACKUP

If the vehicle has been unlocked using the emergency key blade, or the Smart key is not detected by the vehicle, it will be necessary to use the Keyless start backup to disarm the alarm and start the engine.

The Keyless start backup can only be used when the message **Smart Key Not Found - Refer to Handbook** is displayed in the Message centre.



E135423

1. Position the Smart key flat against the underside of the steering column cover with the buttons facing downwards as illustrated.

Note: There are markings on the cover to help locate the correct position.

When the Smart key is correctly positioned, it will be recognised by the vehicle and the message **Smart Key Recognised** will be displayed in the Message centre.

2. Firmly depress the brake pedal.
3. Press and release the engine **START/STOP** button.

Once the engine has started, the brake pedal can be released, if it is safe to do so.

If the Smart key is not recognised, or the engine still fails to start, consult a Dealer/Authorised Repairer.

IF THE ENGINE FAILS TO START

Note: If the engine fails to crank when the engine **START/STOP** button is pressed and there has been a recent collision, seek qualified assistance.

Make sure that the brake pedal is not depressed. Switch on the ignition (see **89, STARTING THE ENGINE**) and check the Instrument panel for warning lamps and the Message centre for warning messages (see **40, INSTRUMENT PANEL MENU**). Seek qualified assistance, if necessary.

Switch off the ignition.

To reset the alarm system, use the valid Smart key to lock and unlock the vehicle (see **4, UNLOCKING THE VEHICLE**).

Note: The following information applies to petrol engine vehicles only.

If the engine persistently fails to start:

1. Make sure that a valid Smart key is inside the vehicle.
2. Firmly depress the brake pedal.
3. Make sure that Park (P) or Neutral (N) is selected.

4. Press and hold the engine **START/STOP** button until the warning lamps illuminate.
5. Slowly depress the accelerator pedal fully and hold it in the fully depressed position.
6. Press and release the engine **START/STOP** button. The engine will begin to crank.
7. Release the accelerator pedal when the engine starts.

Once the engine has started, the brake pedal can be released, if it is safe to do so.

If the engine still fails to start, or fails to crank, consult a Dealer/Authorised Repairer.