

USING CRUISE CONTROL

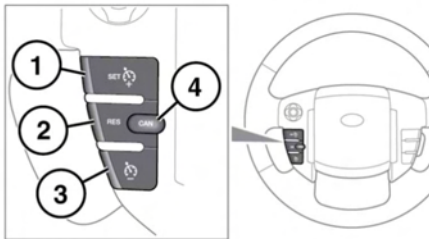


In certain conditions, such as a steep gradient, the vehicle's speed may exceed the set cruising speed. This is because engine braking is unable to maintain or reduce the vehicle's speed. Driver intervention may be required.

Note: Cruise control is not available when using Hill Descent Control (HDC) or when a Terrain response special program has been selected, except for the Grass-Gravel-Snow (GGS) program.

Note: Do not use Cruise control when driving off-road.

Note: Do not use Cruise control with SPORT (S) mode selected.



E146790



RES should be used only if the driver is aware of the set speed and intends to return to it.

3. Press to decrease the set speed.
4. **CANCEL:** Press to cancel, but retain the set speed in the memory. Cruise control will also be cancelled if the brake pedal is pressed, the gear selector is moved to Neutral (N), or if Hill Descent Control (HDC) or Dynamic Stability Control (DSC) are activated.

The system is operated by controls mounted on the steering wheel. The driver can also intervene at any time, by use of the brake or accelerator pedals.

Note: If the accelerator pedal is pressed for more than 5 minutes, Cruise control will be cancelled.

1. **SET+:** Press to set the speed or to increase the set speed. The Cruise control warning lamp will illuminate to confirm Cruise control is operational (see **46, CRUISE CONTROL (GREEN)**).

The cruising speed can also be increased by using the accelerator pedal. When the desired speed is reached, press the button to set and maintain the new speed and then release the accelerator.

Note: Cruise control can only be engaged at speeds in excess of 30 km/h (18 mph).

2. **RES:** Press to resume the set speed.