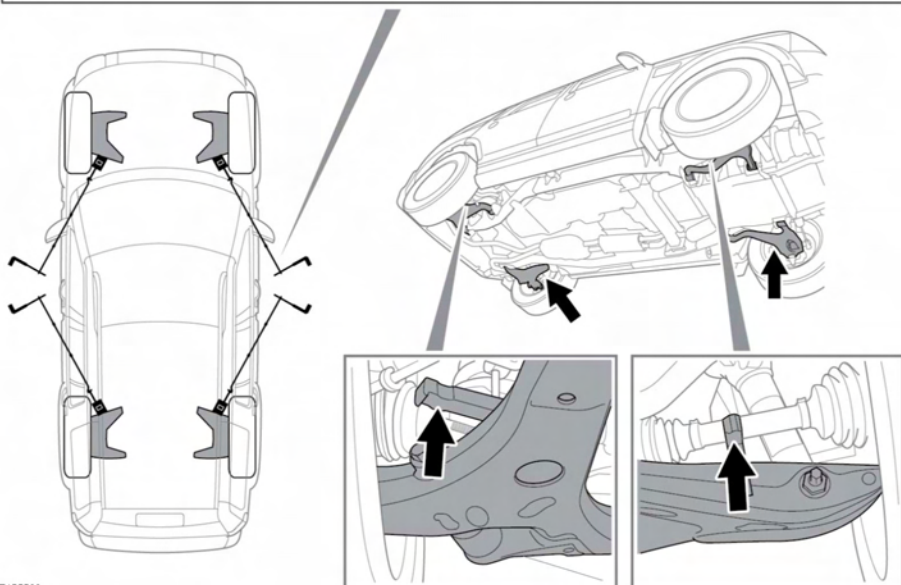
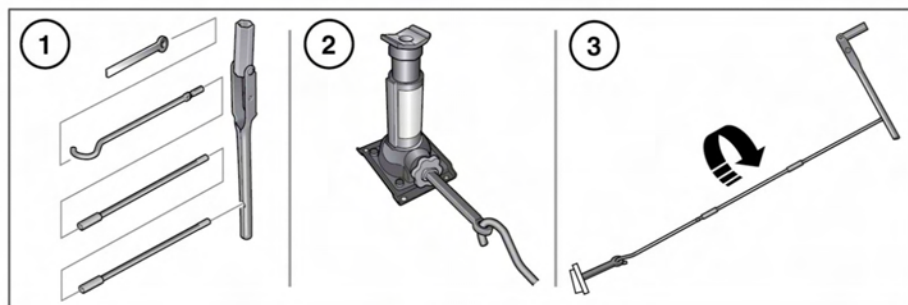


OPERATING THE JACK - COIL SUSPENSION



E155599



WARNING - THAT NO PERSON SHOULD PLACE ANY PORTION OF THEIR BODY UNDER A VEHICLE THAT IS SUPPORTED BY A JACK.

1. Assemble the cranking lever, as shown.
2. Attach the cranking lever to the jack, using the adaptor.

3. Fit the wheel nut brace onto the end of the cranking lever. With the jack located under the correct jacking point, rotate the cranking lever clockwise to raise the vehicle.

LOCKING WHEEL NUTS

Locking wheel nuts can only be removed and installed using the special adaptor provided in the tool kit.