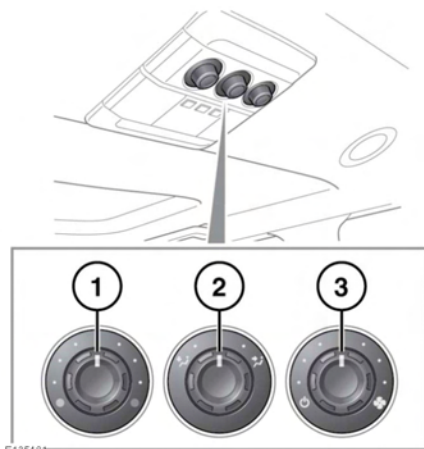


REAR CLIMATE CONTROL



1. Temperature control: Rotate clockwise to increase the temperature.
2. Distribution control: Rotate to the relevant icon to direct the airflow. The control may be turned to a position between icons to split the airflow between the different vents.
3. Blower control: Rotate to the desired setting.

Note: These controls only operate when the Rear environment button (12) is pressed twice, enabling rear manual operation.

AUXILIARY HEATER

Your vehicle may be fitted with an auxiliary heater, which is powered by fuel drawn from the vehicle's tank. The heater only operates at low ambient temperatures, and is controlled by the Timed climate control system.

When the heater is operating, exhaust fumes from the heater may be visible exiting from under the front of the vehicle. This is normal and is not a cause for concern.



Do not operate the auxiliary heater when refuelling the vehicle. Doing so may cause fuel vapours to combust, causing a fire/explosion.



Do not operate the auxiliary heater while the vehicle is in an enclosed space. Doing so can cause a build up of highly toxic fumes, which may cause unconsciousness or death.

TIMED CLIMATE CONTROL

The Timed climate control system provides a comfortable temperature inside the cabin, in advance of the driver and passengers entering. Dependent on the external temperature, the system draws in fresh air to cool the cabin or operates the auxiliary heater to warm it.

The auxiliary heater is also operated to warm the engine and aid starting in very cold conditions.

The Timed climate control system may be operated by either the Touch screen or the remote handset.

The system may not operate or will switch off automatically in the following scenarios:

- If the fuel level is low.
- If the vehicle's battery charge is low.
- If the coolant temperature is at, or above, its required temperature.

SETTING TIMED CLIMATE

The Touch screen can be used to either preset activation times or to operate the system manually.

When the system is operating, the LED in the climate control **AUTO** button will flash.

Note: The system will cease operation if the engine is started.