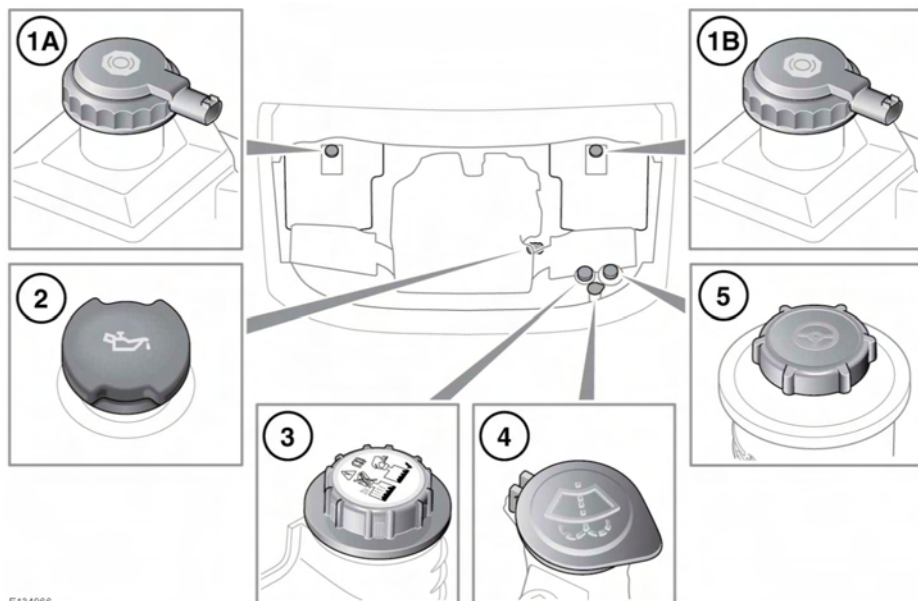


FLUID FILLER LOCATIONS



E134966

1. Brake fluid reservoir cap:
 - A. Right-hand drive vehicles.
 - B. Left-hand drive vehicles.
2. Engine oil filler cap.
3. Engine coolant filler cap.
4. Windscreen washer fluid filler cap.
5. Power steering fluid filler cap.

! Do not drive if there is a possibility that leaked fluid will come into contact with a hot surface, such as the exhaust.

CHECKING THE ENGINE OIL LEVEL

! Check the engine oil weekly. If any significant or sudden drop in the oil level is noted, seek qualified assistance.

! If the message **ENGINE OIL PRESSURE LOW** is displayed, stop the engine as soon as it is safe to do so and seek qualified assistance. Do not start the engine until the cause has been rectified.

Prior to checking the oil level, make sure that:

- The vehicle is on level ground.
- The engine oil has reached working temperature (oil is hot).
- The engine has been switched off for 10 minutes, as the system will not give an accurate reading until the oil level has stabilised.

The oil level can then be checked as follows:

1. Switch on the ignition (do not start the engine).
2. Make sure Park (P) is selected.