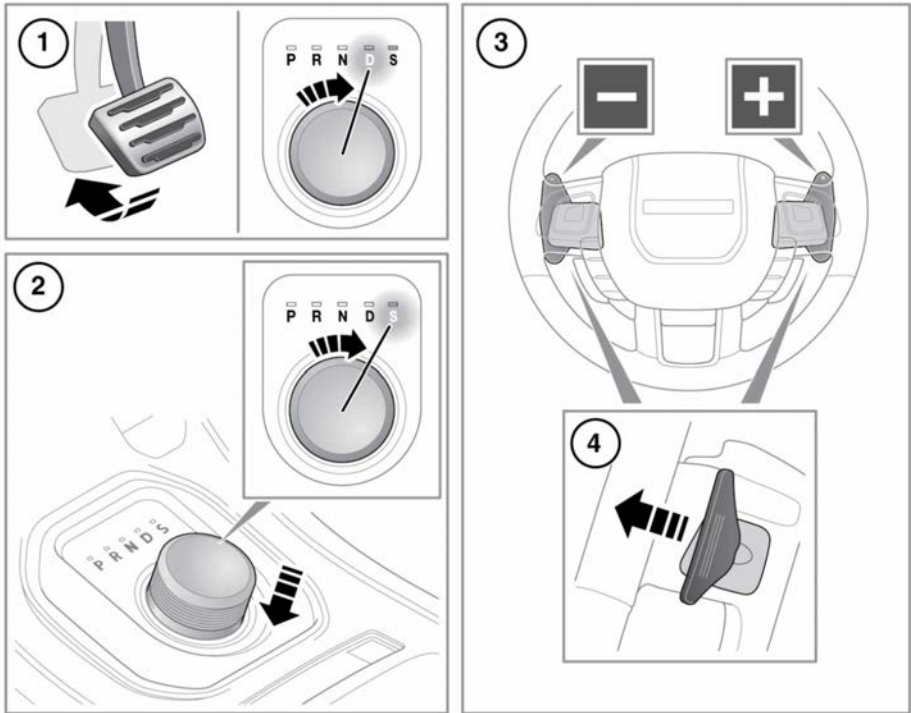


AUTOMATIC TRANSMISSION



E155586

The rotary gear selector rotates in either direction. At engine start up, the gear selector elevates out of its parked position.

The CommandShift™ and gear selector status will be displayed in the Message centre.

1. To select Drive (**D**), Reverse (**R**), Neutral (**N**) or Park (**P**), apply the brake pedal, then rotate the gear selector to the required position. The related LED indicator by the gear selector will illuminate. While in **D**, the gear changing is fully automatic. The shift points are determined by the accelerator pedal position and the vehicle's current speed.

To achieve rapid acceleration (kick-down) while in **D**, quickly depress the accelerator pedal to its full travel. When the accelerator pedal is relaxed, normal automatic gear changing will resume.

Note: Before selecting **D**, **R**, **N** or **P** make sure the vehicle is stationary and the brakes are applied.

Note: If pressure is applied to the gear selector before the brake pedal is applied, the selected gear may not be available. In this situation, remove the pressure from the gear selector, make sure the brake pedal is applied and select the required gear as described.

2. To select **S** mode from **D**, press the gear selector down and rotate to **S**. The related LED by the gear selector will illuminate. The transmission will stay in the lower gears for longer, improving mid-range performance. To deselect **S** mode, rotate the gear selector back to **D**.

3. CommandShift™ gear selector paddles. Allows manual gear selection, while the selector is in either the **D** or **S** positions. CommandShift™ can be configured to work in **S** only, or in **S** and **D** from the **Driving Features** menu, which is accessed via the **Vehicle Set-up** menu in the Instrument panel. See **42, INSTRUMENT PANEL MENU**. Lightly pull the left paddle for downshifts or lightly pull the right paddle for upshifts.

TRANSMISSION COMMANDSHIFT SELECTED will appear briefly in the Message centre when CommandShift™ is first selected.

CommandShift™ can be effective when rapid acceleration and engine braking are required.

A gear shift indicator warning lamp will illuminate briefly at the recommended (upshift) gear change point. See **48, GEAR SHIFT (GREEN)**.

Note: If continued use of the CommandShift™ gear selector paddles is required, select **D** or **S**.

4. To exit the CommandShift™ mode and return to **S** mode, lightly pull and hold the upshift (+) paddle for approximately 1 second. To return to **D** mode, move the rotary gear selector back to the **D** position.



WARNING: Before exiting the vehicle, always make sure the gear selector is in the **P** position, the engine is turned off, the Electric Parking Brake (EPB) is applied and the Smart key is removed from the vehicle.



Never select **P** while the vehicle is in motion. Doing so can result in serious transmission damage.



Never select **R** while the vehicle is in forward motion. Doing so can result in serious transmission damage.



Never select a forward gear while the vehicle is moving backwards. Doing so can result in serious transmission damage.



Do not rev the engine or allow it to run above normal idle speed while selecting **D** or **R**, or while the vehicle is stationary with any gear selected. Doing so can result in serious transmission and/or engine damage.



Do not allow the vehicle to remain stationary with a drive gear selected and the engine running. Always select **N** and apply the EPB if the engine is to idle for a prolonged period. The vehicle may move unexpectedly with any other gear position selected.



Do not use **N** for vehicle recovery. See **253, RECOVERY METHOD**.