



Do not allow the battery posts or terminals to come into contact with your skin. They contain lead, and lead compounds which are toxic. Always wash your hands thoroughly after handling the battery.



Battery electrolyte is both corrosive and toxic and can damage a wide range of materials. Do not allow battery electrolyte to come into contact with fabrics or painted surfaces. Any contaminated surface should be washed down immediately with copious amounts of clean water.

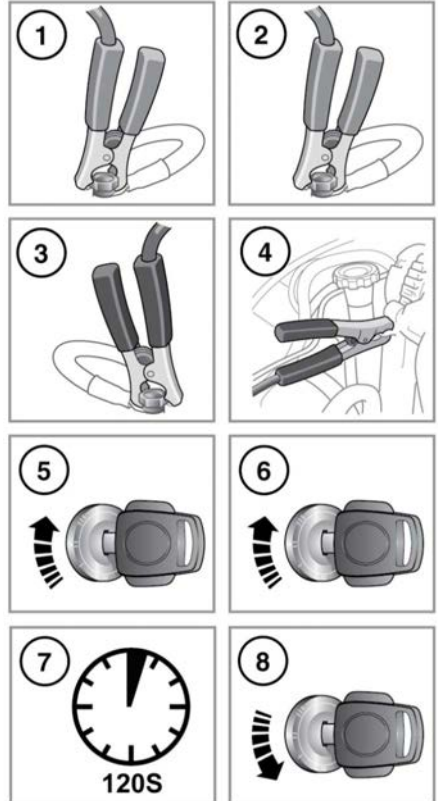
BATTERY ELECTROLYTE LEVEL

Your vehicle is fitted with a low maintenance battery.

In hot climates, frequent checks of the battery electrolyte level and condition are required. If necessary, the battery cells can be topped up using distilled water.

CONNECTING BOOSTER CABLES

Note: Before connecting booster cables make sure that the battery connections on the disabled vehicle are correct, and that all electrical equipment has been switched off.



E135743

1. Connect one end of the positive booster cable to the positive terminal (red battery cable) on the donor vehicle's battery.
2. Connect the other end of the positive booster cable to the positive terminal (red battery cable) on the disabled vehicle's battery.