

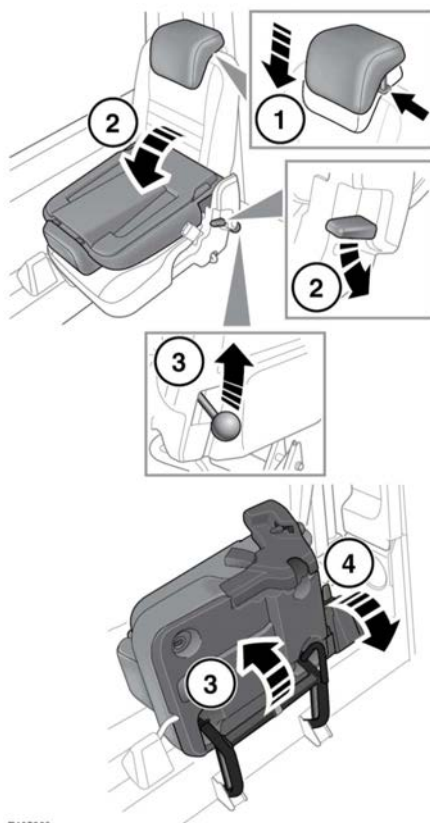


When erecting the rear seats, make sure that seat belts are correctly routed in front of the seat and not trapped behind them.



Make sure that the seat base is firmly latched before raising the seatback. Failure to do so will damage the latch mechanism.

FOLDING AND RAISING THE SIDE FOLD SEATS



1. Lower the head restraints.

2. Push the locking catch for the seatback downwards then fold the seat forwards.
3. Pull the locking lever for the seat base upwards then fold the seat upwards until the retaining catch engages.
4. To unlatch the seat assembly, pull the release catch in the direction shown in the illustration.
5. Lower the seat base until it securely latches.



Make sure the head restraint is refitted and adjusted, once the child seat is removed or the seat is restored to the seating position.

6. Unfold the seatback until it securely latches.
7. Adjust the head restraint to the correct position.



Make sure that when a side fold seat is raised, the locking mechanism is fully engaged.



When raising the rear seats, make sure that seat belts are correctly routed in front of the seat and not trapped behind them.

E135666