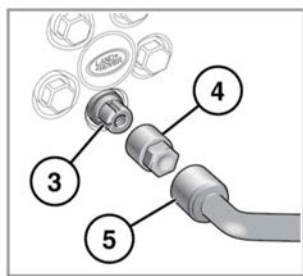
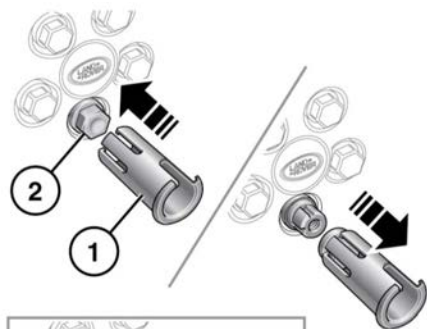


Wheel changing

Releasing locking wheel nuts







E135712

1. Push the cover removal tool **1** over the locking wheel nut cover **2**. Make sure that it is fully engaged.
2. Pull the tool squarely away from the wheel to remove the wheel nut cover.
3. Fit the adapter **4** onto the exposed locking wheel nut **3**.
4. Use the wheel brace **5** on the adapter to release the wheel nut.

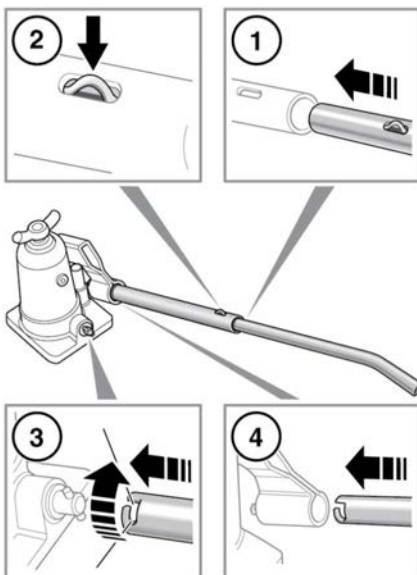
Note: If the cover removal tool is inadvertently fitted to a standard wheel nut, it can only be released by removing the wheel nut. The wheel brace will fit inside the cover removal tool and onto the wheel nut.

Note: After use, store the wheel nut adapter correctly in the tool kit.

OPERATING THE JACK

-  **WARNING - THAT NO PERSON SHOULD PLACE ANY PORTION OF THEIR BODY UNDER A VEHICLE THAT IS SUPPORTED BY A JACK.**
-  **Make sure that the jack is not positioned over metal gratings or a manhole cover.**
-  **Make sure that the jack is correctly located onto the vehicle jacking point. Do not use any other position to jack the vehicle.**
-  **Never use the bottle jack from the side of the vehicle.**

Before you position the jack under the vehicle, make sure you are familiar with its operation.



E135713

1. Slot the 2 parts of the jack lever together.
2. Make sure that the spring clip protrudes from the engagement slot.