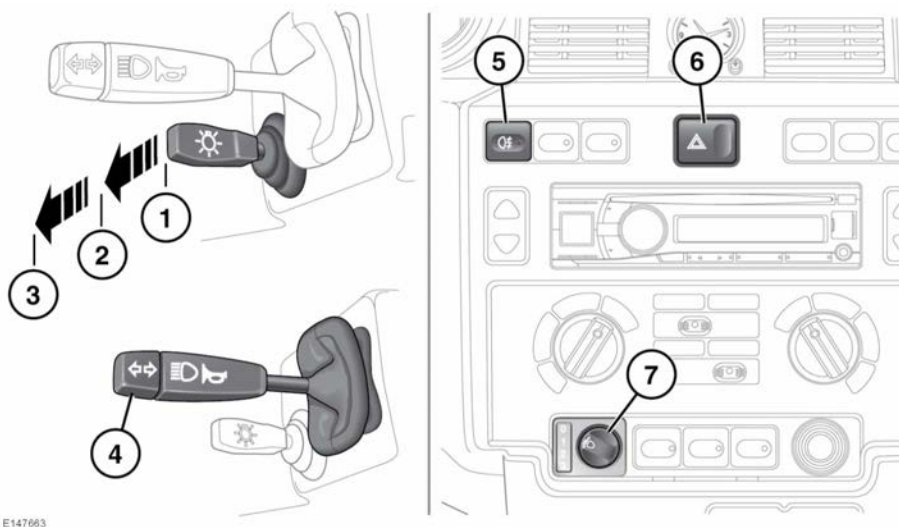


## LIGHTING CONTROL



E147663

1. Headlamps/side lamps off.
2. Side, tail and Instrument panel lamps on.
3. Headlamp low beam on.
4. Push forward for high beam. Pull back for high beam flash. Move up or down to operate the direction indicators. When the headlamp high beam is on, the high beam warning indicator will illuminate. See **30, HIGH BEAM (BLUE)**.
5. Rear fog lamps switch: The fog lamps operate only when the headlamp low beam is on. The rear fog lamp warning indicator will illuminate in the Instrument panel (see **30, REAR FOG LAMP (AMBER)**). Press again to switch off.
6. Hazard warning lamps switch: Press to operate all indicator lamps.

7. Headlamp levelling control: Use the control to account for vehicle loading changes, as this will avoid dazzling other road users. Refer to the following table for the recommended setting:

Vehicle load	Switch position
Driver only (loadspace empty)	0
Driver and front seat passenger (loadspace empty)	0
Driver and passengers in all seats (loadspace empty)	1
All seats occupied and loadsace loaded to maximum rear axle weight	2
Driver only with loadsace loaded to maximum rear axle weight	3