

# Exiting the vehicle

## LOCKING AND ARMING THE ALARM

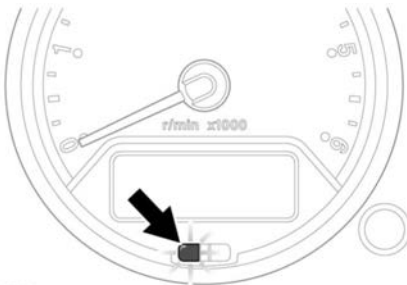
It is not recommended that the vehicle is locked with the key. Key locking does not arm the alarm system. The key can be used to lock and unlock the tailgate.

Press the lock button on the remote control briefly to lock the vehicle, immobilise the engine and arm the alarm. The direction indicators will flash to indicate that the vehicle is locked. The alarm indicator in the Instrument panel will start to flash.

Once the system is armed, the alarm will sound if:

- A door, the bonnet or the tailgate is opened.
- Movement is detected inside the vehicle.
- An attempt is made to disconnect the alarm siren.

**Note:** If the alarm is armed and a window or sunroof is left open, the interior alarm sensor will detect air currents. The alarm will sound.



E135660

The alarm status is displayed by the indicator. After locking the vehicle, one of the following will be indicated.

- The indicator illuminates for 10 seconds and then adjusts to a slower frequency - driver's door is not closed.
- The indicator flashes slowly - engine is immobilised, but the alarm is disarmed.

- The indicator flashes rapidly for 10 seconds and then adjusts to a slower frequency - alarm is armed and the engine is immobilised.

## MISLOCK

When attempting to lock the vehicle, if one of the doors, the bonnet, or the tailgate are not shut fully; the horn will sound twice, the direction indicators will not flash and the alarm system will not be fully active.

With central door locking fitted, the vehicle will not fully lock until the door, bonnet and the tailgate are fully closed.

## DOOR LOCKS AND RELEASE LEVERS

**Note:** Central door locking prevents slam locking of the driver's door.

If the doors are unlocked, each of them can be locked by pressing the appropriate sill locking button.

The driver's door sill locking button will lock all doors. This does not activate engine immobilisation or the alarm system.

Pull the interior lever to open the door.

To lock the tailgate, push the locking catch up to the highest point.

Lift the interior lever to open the tailgate.