

Exiting the vehicle

Press and hold the lock button on the Smart key for 3 seconds. The vehicle will Single lock and the Perimeter alarm will be activated immediately. After 3 seconds, any open windows and the sunroof will be closed. Press the lock button twice in 3 seconds to Double lock the vehicle.

This feature can be enabled/disabled via the **Vehicle Set-Up** menu. See **44, INSTRUMENT PANEL MENU**.

With a valid Smart key present, press and hold the keyless locking sensor (if fitted) on any exterior door handle. The vehicle will Single lock and the Perimeter alarm will be activated immediately. After approximately 3 seconds, any open windows and the sunroof will begin to close.

Keep the keyless locking sensor pressed until all open windows and the sunroof are fully closed. Releasing the keyless locking sensor will stop all window and sunroof movement.

When all of the windows and the sunroof are closed, release and then press the keyless locking sensor to Single lock the vehicle.

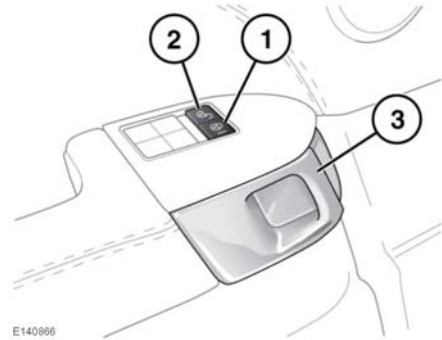
Alternatively, press the keyless locking sensor twice within 3 seconds to Double lock the vehicle.

This feature can be enabled/disabled via the **Vehicle Set-Up** menu. See **44, INSTRUMENT PANEL MENU**.

DOOR LOCKS AND RELEASE LEVERS



While a door is open, the locking latch is exposed. If your vehicle is fitted with the Soft close feature, do not attempt to manually close the latch as it may also automatically 'soft close' and trap items or body parts.



1. Lock:

- With all of the doors closed, press any lock button to lock all of the doors.

2. Unlock:

- Press any unlock button to unlock all of the doors. Alternatively, pull either front door release handle (3) once to unlock all of the doors.
- Pull either rear door release handle (3) once to unlock the individual rear door.

Note: All unlock buttons are inhibited when the vehicle is locked with the Smart key.

- ### 3. Door release handle:
- pull to unlock and open the door(s). If the door is locked, pulling either front door handle once will unlock all of the doors. Pulling either rear door handle once will unlock the individual rear door.