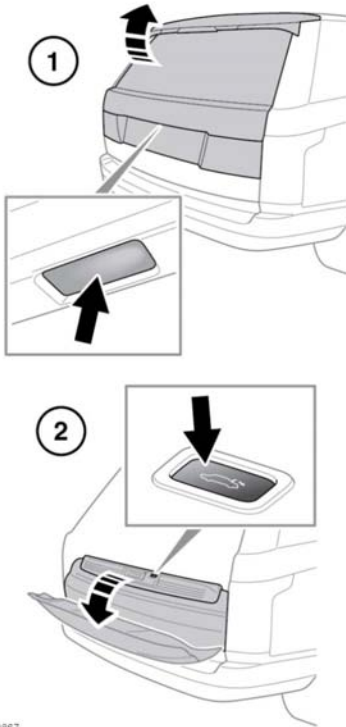


Entering the vehicle



E140867

1. Upper tailgate release. Lift the upper tailgate to open.

Note: The upper tailgate external release switch will operate if all of the doors are unlocked and the gear selector is in the Park (P) position. If the gear selector is in the Neutral (N) position, the switch will only operate if all of the doors are unlocked, and the ignition is in convenience mode or switched off. The switch will not operate if the gear selector is in any other position.

2. Lower tailgate release: only visible/operational when the upper tailgate is open. Pull the lower tailgate downwards to open.

The upper tailgate can also be released using the following methods:

- The interior tailgate release switch. See **324, DRIVER CONTROLS**.
- The Smart key tailgate release switch. See **4, UNLOCKING THE VEHICLE**.

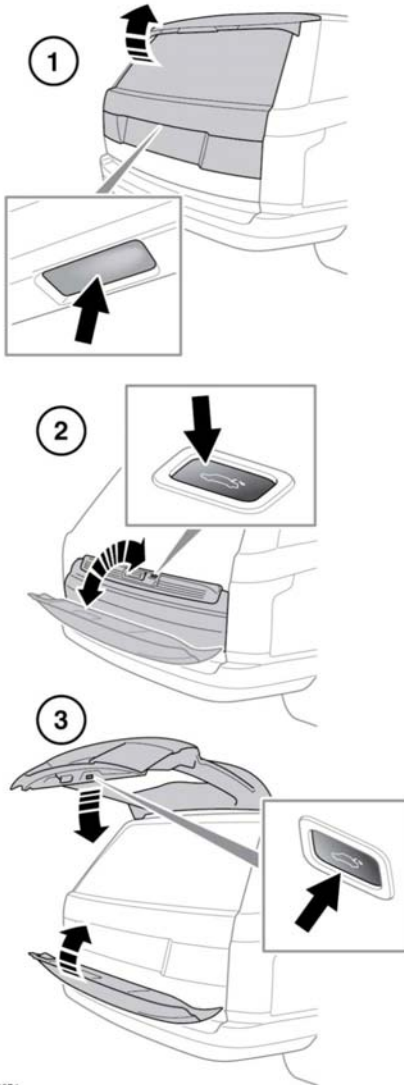
Note: The tailgate will not open if the vehicle is travelling at or above approximately 5 km/h (3 mph).

OPENING AND CLOSING THE POWERED TAILGATE

⚠ While the tailgate is open, the locking latch is exposed. Do not attempt to manually close the latch, as it may also automatically 'soft close' and trap items or body parts.

! Make sure there is a minimum space of 1.0 m (39 in) above and at the rear of the vehicle before operating the tailgate. Insufficient space may result in damage to the vehicle.

! Do not operate the tailgate if a cycle rack is fitted to the tailgate. Remove any cycles and/or racks before operating the tailgate.



E140871

1. Upper tailgate open/close using the exterior button. Press to open, stop, reverse direction or close the upper tailgate. Press to close the upper and lower tailgates.

Note: When using the upper tailgate external release switch, all of the doors must be unlocked and the gear selector in either Park (P) or (N) position

2. Lower tailgate open/close. Press to open, stop, reverse direction or close the lower tailgate.
3. Tailgate fully close. This button will close the upper and lower tailgate.

The upper tailgate can also be released using the following methods:

- The interior tailgate release switch. See **324, DRIVER CONTROLS**.
- The Smart key tailgate release switch. See **4, UNLOCKING THE VEHICLE**.

After the tailgate has opened to its set height, it can be manually raised or lowered. If either of the tailgates fail to open or close correctly, close it manually and then press the tailgate release switch again.

As the closing tailgate approaches the closed position, it will 'soft close' to the fully-closed position. If the tailgate is completely closed and the vehicle was previously locked, the alarm will re-arm. The hazard warning lamps will flash to confirm the alarm status. An audible confirmation may also be given.

Note: If a tailgate switch is pressed while the tailgate is opening or closing, all movement will stop. However, if a switch is pressed during the 'soft close' stage, the open request will be ignored.

Note: The tailgate has a minimum closing height, below which it will not power close. Open the tailgate manually to the fully open position and then press the tailgate complete close button.