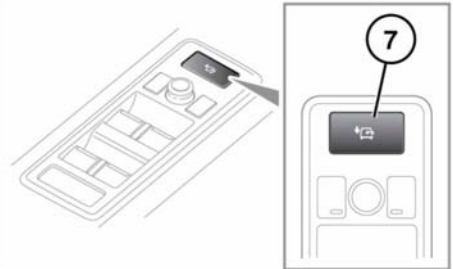
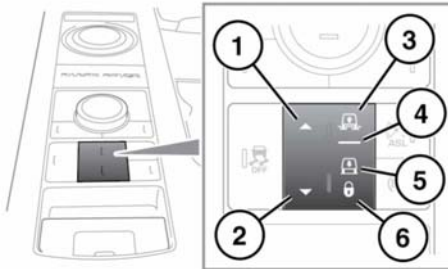


AIR SUSPENSION SYSTEM



Make sure that the vehicle is clear of people and obstacles before lowering the suspension. The difference between Off-road height and Access height can be 125 mm (4.9 in).



E140363

1. Raise the suspension height.
2. Lower the suspension height.
3. Off-road height indicator.
4. Normal height indicator.
5. Access height indicator: Access height is 50 mm (2.0 in) lower than normal height.
6. Suspension locked in Access height indicator.
7. Access height switch.

Note: The system may raise or lower the vehicle automatically (e.g., if a Terrain response program requires it, or if the vehicle is travelling at high speed).

Changes to the height of the vehicle must be made when all of the doors are closed. Except for remote operation (see **123, REMOTE OPERATION**) the engine must also be running or in Intelligent stop/start mode. If a door is opened during a height change, the height change will be suspended. If the door is closed within 90 seconds, the height change will resume. If the doors are not closed in time, the Message centre will display a message **CONFIRM REQUIRED SUSPENSION HEIGHT**. Driving off will return the vehicle to normal height.

Note: If the Air suspension is used many times in succession, speed of operation may slow.