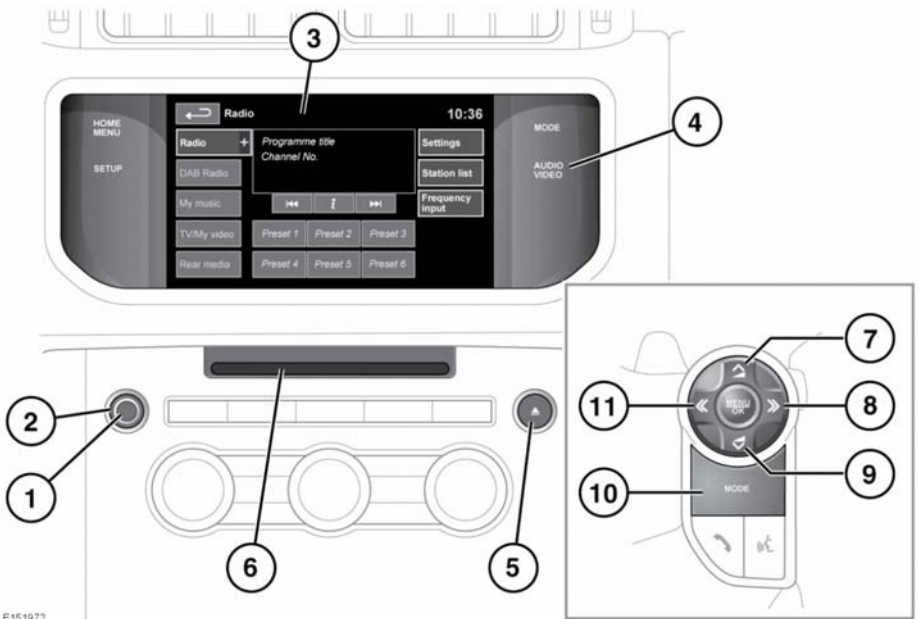


## AUDIO/VIDEO CONTROLS



E151972



**In the interest of safety, only operate, adjust or view the system, when it is safe to do so.**



**Sustained exposure to high sound levels (greater than 85 decibels) can damage your hearing.**

1. Press to switch the Audio system on/off.

**Note:** The Audio system will operate with the ignition on or off, but will always switch off when the ignition is switched off. Switch the audio on again, if required.

2. Rotate to adjust the volume level.

**Note:** If the volume is turned to zero while a Compact Disc (CD) is playing, the CD will pause play. Play will resume when a greater volume is selected.

3. Touch screen.

4. **AUDIO VIDEO:** Press for direct access to the **Audio/Video** menu.
5. CD/Digital Versatile Disc (DVD) eject button.
6. CD/DVD loading slot.  
The player will accommodate 1 disc at a time, but up to 10 CDs can be uploaded onto the CD store. Only Compact Disc Digital Audio (CDDA) discs can be uploaded onto the CD store. Only discs with CDDA tracks and no other type, can be uploaded to the Stored CD store.  
Insert a disc into the loading slot until resistance is felt. The player mechanism will complete the loading.
7. Press to increase the volume for any source.
8. Seek up: