



WARNING: Medical devices: The undersides of the forward and mid loadspace cover sections each contain a magnet. The magnets are located in depressions along the centre line of the vehicle. The magnetic field may interfere with pacemakers, defibrillators, or other medical devices.

When in the vehicle, or when handling the loadspace cover, maintain at least 15 cm (6 inches) of separation between your pacemaker or defibrillator and the loadspace cover.



WARNING: Do not store the loadspace cover loose in the vehicle.



WARNING: Never place objects on top of the loadspace cover. During an accident or sudden manoeuvre, loose objects can cause serious injury or death.

1. To fold the loadspace cover, push firmly down and forwards. Then, using fingertips, push upwards on the underside of the loadspace cover handle.
2. Fold the loadspace cover forwards.
3. To remove the loadspace cover, pull the whole assembly rearwards to disconnect the locating pins. Remove and store safely.

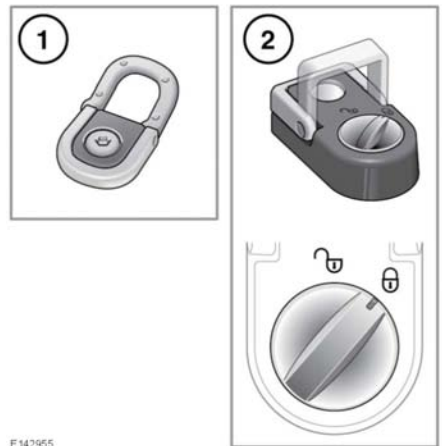
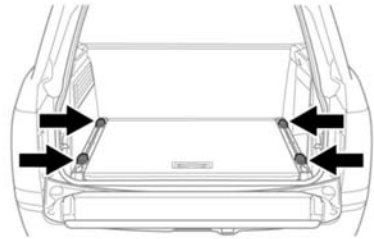
Note: To remove or refit the loadspace cover, it is first necessary to make sure the rear seats are in the fully upright position.

4. To refit the loadspace cover, place the assembly in position. Engage the locating pins in the sockets and press firmly to lock the assembly in position. If required, pull the outer edge towards the rear to cover the loadspace area.

5. To access the loadspace from inside the vehicle, push firmly down on the furthest edge of the cover while pulling it towards the rear seats. The cover will fold allowing access to the loadspace area.

Note: To access objects in the loadspace from within the vehicle, it may first be necessary to remove the rear head restraints.

LUGGAGE ANCHOR POINTS



E 142955



All items carried in the loadspace should be properly secured.

Load carrying

1. To assist in safely securing large items of luggage, 4 lashing eyes are located in the rear loadspace floor.
2. If adjustable lashing eyes are fitted, first turn the locking button counter-clockwise to unlock. Press the button and slide to the required position in the luggage rail. Release the button to latch into position. Move the lashing eye slightly until you hear a click. The lashing eye is now secured. Turn the button clockwise to lock.

Note: A range of approved luggage retention accessories are available from your Dealer/Authorised Repairer.