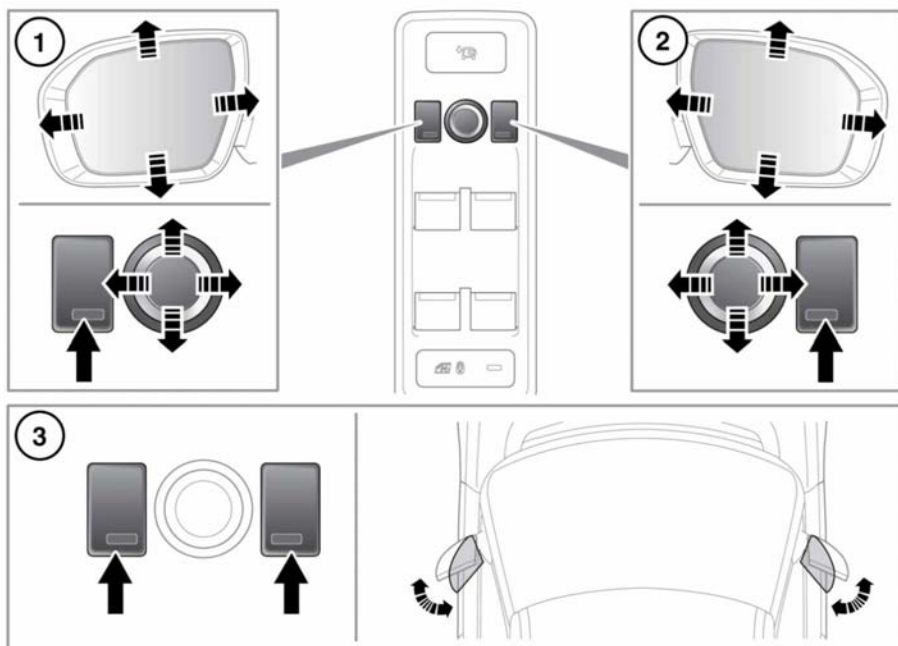


## EXTERIOR MIRRORS



E139337

1. Left mirror adjustment.
2. Right mirror adjustment.
3. Press both switches together to fold/unfold the mirrors.

**Note:** If the mirrors are manually folded or knocked into the folded position accidentally, the mirror head will be loose. To re-engage the mechanism, fold, then unfold the mirrors using the switches.

A thermal cut-out which will temporarily disable the power-fold feature if the switches are operated repeatedly.

Power-fold will only operate if the vehicle is stationary, or travelling at speeds of less than 113 km/h (70 mph).

The mirrors can be adjusted and folded when the ignition is on and for up to 5 minutes after the ignition is switched off, provided the driver's door is not opened.

Press the appropriate button to select the mirror to be adjusted (button indicator illuminates), then use the joystick control to adjust the mirror glass.



The mirrors can be configured by your Dealer/Authorised Repairer to automatically fold when the vehicle is locked, and unfold when it is unlocked.

**Note:** If the mirrors were folded using the switches, they will not unfold when the vehicle is unlocked.