

TRANSMISSION PARK RELEASE

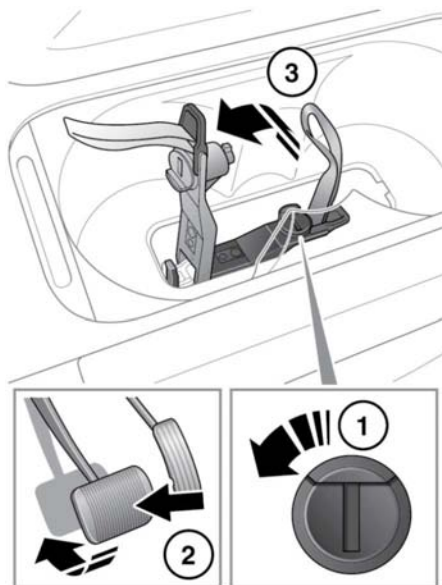
When recovering the vehicle, it is essential that the transmission park release mechanism is activated. This will lock the transmission in Neutral (N) and prevent the transmission from automatically selecting Park (P). The transmission park release mechanism is activated by a lever, beneath the centre console cup holders.

⚠ Before activating the transmission park release mechanism, select P, apply the Electric Parking Brake (EPB) and turn the vehicle's ignition off.

To gain access to the transmission park release mechanism, carry out the following:

1. Open the centre console cup holder cover, and remove the cup holder inserts.
2. Use a flat bladed screwdriver, or similar, to remove the access panel.

To activate the transmission park release mechanism, carry out the following:



E161700

1. Turn the locking mechanism 90° counter-clockwise.
2. Apply the brake pedal.
3. Use the strap to pull the transmission park release mechanism upwards, until it latches in the vertical position.

When the transmission park release mechanism is activated, the gear selector will remain in **P**, but the selector indicator and the Instrument panel will both display a flashing **N**.

When vehicle transportation has been completed, the transmission park release mechanism will need to be deactivated. To deactivate the transmission park release mechanism, carry out the following: