

Note: When resuming a set speed while in a curve, acceleration is reduced. A more severe curve will reduce acceleration further. Remember that ACC and Queue assist are primarily for use when minimal steering is required.

HINTS ON DRIVING WITH ACC

During some situations, Adaptive Cruise Control (ACC) may provide the driver with an indication that intervention is required.

An audible alarm will sound, accompanied by the message **DRIVER INTERVENE** in the Message centre, if ACC detects:

- A failure has occurred while the system is active.
- That using maximum ACC braking only is not sufficient.

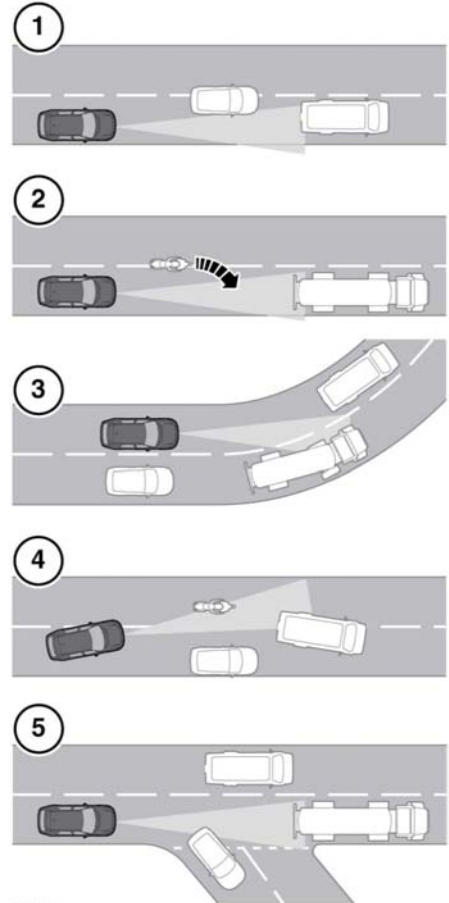
Note: ACC only operates when the gear selector is in Drive (D).

Note: When engaged, the accelerator pedal rests in the raised position. Fully release the pedal to allow normal ACC operation.

Note: When braking is applied by the ACC, the vehicle's brake lamps will illuminate.

Note: When Intelligent stop/start is fitted, it may operate during a Queue assist stop. Press the accelerator pedal for longer than normal to restart the engine and move off.

DETECTION BEAM ISSUES



E142911

Detection issues can occur:

1. When driving on a different line to the vehicle in front.
2. When a vehicle edges into your lane. The vehicle will only be detected once it has moved fully into your lane.