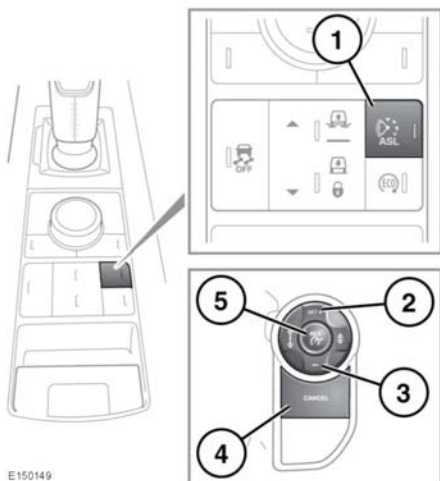


ASL CONTROLS



E150149

ASL allows a speed limit to be set that the driver does not wish to exceed.

⚠ In certain conditions, such as a steep downhill gradient, the vehicle's speed may exceed the set speed limit. This is because engine braking is unable to maintain or reduce the vehicle's speed.

1. ASL on/off: The ASL button switches between cruise control and ASL. The systems cannot be used simultaneously. The ASL indicator will illuminate when ASL is active. See **52, AUTOMATIC SPEED LIMITER (AMBER)**.

⚠ When the vehicle ignition is switched on, the previous state, either cruise control or ASL, will automatically be recalled and made active. The set speed will not be recalled.

Note: ASL operates at all vehicle speeds. A vehicle speed can be set from upwards of 32 km/h (20 mph).

2. Set/increase speed limit: The set speed limit will be displayed in the Message centre. When a speed has been set, the engine will respond normally up to the set speed. Further accelerator pressure will not increase the speed beyond the set speed unless sudden, rapid acceleration (kickdown) is applied. If kickdown is initiated, ASL will be suspended. ASL will reactivate once vehicle speed drops below the set speed.
3. Decrease speed limit: The set speed limit will be displayed in the Message centre.
4. Suspend ASL assistance: ASL can also be suspended by applying sudden, rapid acceleration (kickdown).
5. Resume ASL assistance: ASL will only resume if the vehicle's speed is less than the set speed and greater than 32 km/h (20 mph). If these criteria are not met, a message will be displayed in the Message centre.