

The keyless start backup can only be used when the message **Smart Key Not Found - Position As Shown And Press Start Button** is displayed in the message centre.

Electrically adjusted steering column



1. Position the Smart key flat against the side of the steering column with the buttons facing outwards.

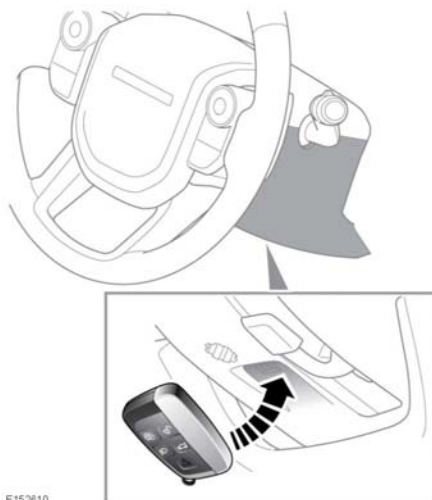
Note: The steering column has markings on the side to aid placement of the Smart key.

2. Firmly depress the brake pedal.
3. Press and release the engine **START/STOP** button.

Once the engine has started, the brake pedal can be released if it is safe to do so.

If the Smart key is not recognised, or the engine still fails to start, consult a Dealer/Authorised Repairer.

Manually adjusted steering column



1. Position the Smart key against the underside of the steering column with the buttons facing downwards.

Note: The steering column has markings on the underside to aid placement of the Smart key.

2. Firmly depress the brake pedal.
3. Press and release the engine **START/STOP** button.

Once the engine has started, the brake pedal can be released if it is safe to do so.

If the Smart key is not recognised, or the engine still fails to start, consult a Dealer/Authorised Repairer.

IF THE ENGINE FAILS TO START

Note: If the engine fails to crank when the engine **START/STOP** button is pressed and there has been a recent collision, seek qualified assistance.

Starting the engine

Make sure that the brake pedal is not depressed. Switch on the ignition (see **100, SWITCHING ON THE IGNITION**) and check the instrument panel for warning lights and the message centre for warning messages. See **46, INSTRUMENT PANEL**. Seek qualified assistance if necessary.

Switch off the ignition.

To reset the alarm system use a valid Smart key to lock and unlock the vehicle. See **4, UNLOCKING THE VEHICLE**.

Note: *The following information applies to petrol engine vehicles only.*

If the engine persistently fails to start.

1. Make sure that a valid Smart key is inside the vehicle.
2. Press and hold the engine **START/STOP** button until the warning lamps illuminate.
3. Firmly depress the brake pedal.
4. Make sure Park (**P**) or Neutral (**N**) is selected.
5. Slowly depress the accelerator pedal fully and hold it in the fully depressed position.
6. Press and release the engine **START/STOP** button. The engine will begin to crank.
7. Release the accelerator pedal when the engine starts.

Once the engine has started, the brake pedal can be released if it safe to do so.

If the engine still fails to crank or start, consult a Land Rover Dealer/Authorised Repairer.