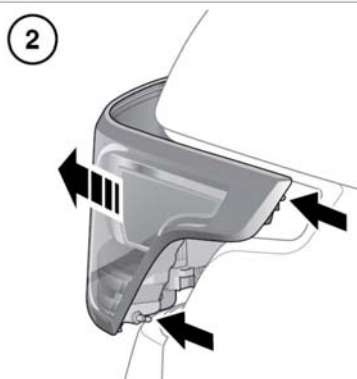
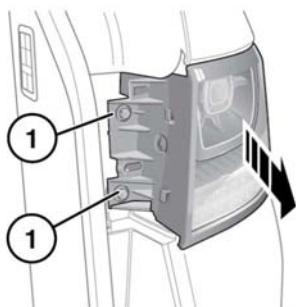


REAR LAMP REMOVAL

To change any of the rear bulbs, it is necessary to completely remove the lamp unit from the vehicle.

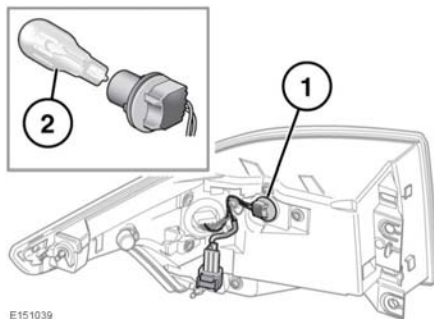


E151038

1. With the tailgate open, remove the trim panel and then remove the 2 screws from the inner edge of the unit.
2. Firmly but carefully pull the unit away from the vehicle, releasing the 2 lugs situated at the rear of the lamp unit.
3. Disconnect the electrical connector and remove the unit from the vehicle. Place face down on a flat surface covered in soft material to prevent damage.

REAR LAMP BULB REPLACEMENT

Note: The direction indicator lamp, stop lamp, and tail lamp are LED units, and cannot be serviced.



E151039

1. Reversing lamp.
2. Twist the relevant bulb unit and pull to access the bulb. Push, twist and pull to remove the bulb.

REAR FOG LAMP BULB REPLACEMENT



Always find a safe place to stop, off the highway and away from traffic.



Apply the parking brake and engage Park (P).



Switch on the hazard warning lamps.



Place a warning triangle at a suitable distance behind the vehicle, facing towards oncoming traffic.



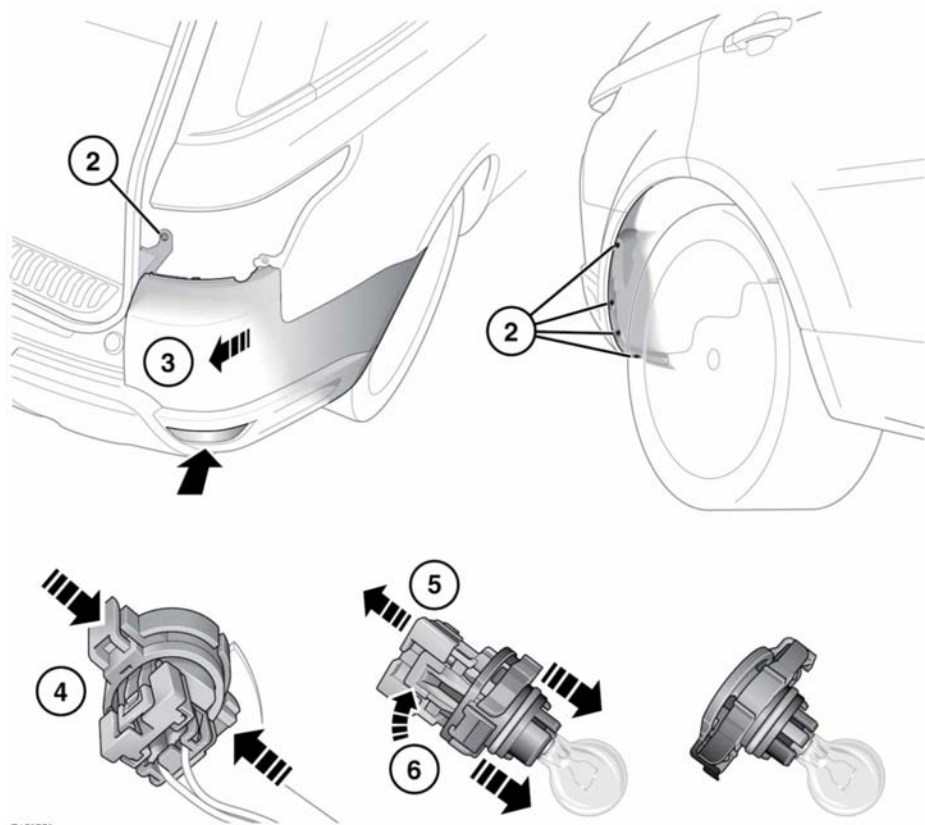
Disconnect trailer/caravan from vehicle.



Make sure all passengers, and animals, are out of the vehicle and in a safe place away from the highway.



If the vehicle has been driven recently, do not touch the exhaust system components until they have cooled.



E153779

Access to a rear fog lamp housing is from above and behind the rear bumper. The bulb holder is a black plastic unit that incorporates the bulb. Set the air suspension to the Off-road height position, for increased access to the bumper fixings. See **111, OFF-ROAD HEIGHT**.

1. Remove the rear lamp unit. See **215, REAR LAMP REMOVAL**.
2. Remove the 5 fixings from the bumper.

3. Gently and evenly pull the bumper to release the 8 securing clips from the wing panel.



Do not use excessive force, as this may cause damage to the vehicle.

Note: Only limited movement is required to allow access to the rear of the fog lamp unit.

4. To remove the bulb holder, press in the outer wings on the black plastic unit and pull the holder free of the housing.