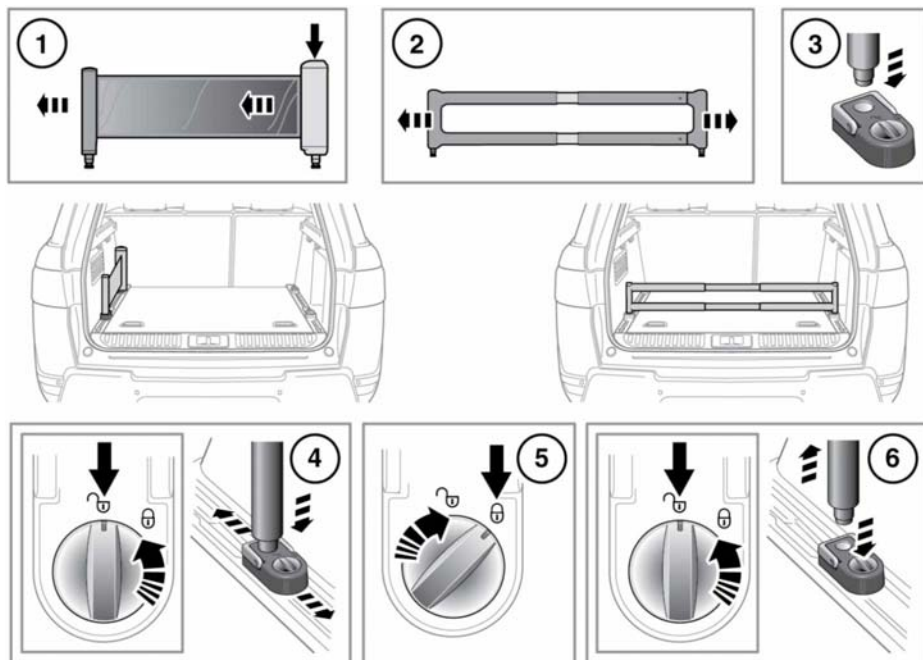


LUGGAGE DIVIDER

A luggage divider kit is provided to assist with safely securing items of luggage to the loadspace floor.

Floor mounted luggage rails provide a full width mounting channel that will accommodate a flexible retracting band or a solid telescopic divider to retain soft and hard luggage of all shapes and sizes.



E150873

1. Press then pull the retracting band until the required length is reached.
Note: The retracting band should only be used along the side of the loadspace floor, as illustrated.
2. Adjust the divider to the required length.
3. Unlock the appropriate lashing eye and attach the retracting band/divider.
4. With the lashing eye in the unlocked position, press the button and slide to the required position in the luggage rail.
5. Lock the lashing eye in the required position.
6. To remove the retracting band/divider from lashing eye, unlock lashing eye and press the lock/unlock button to release.