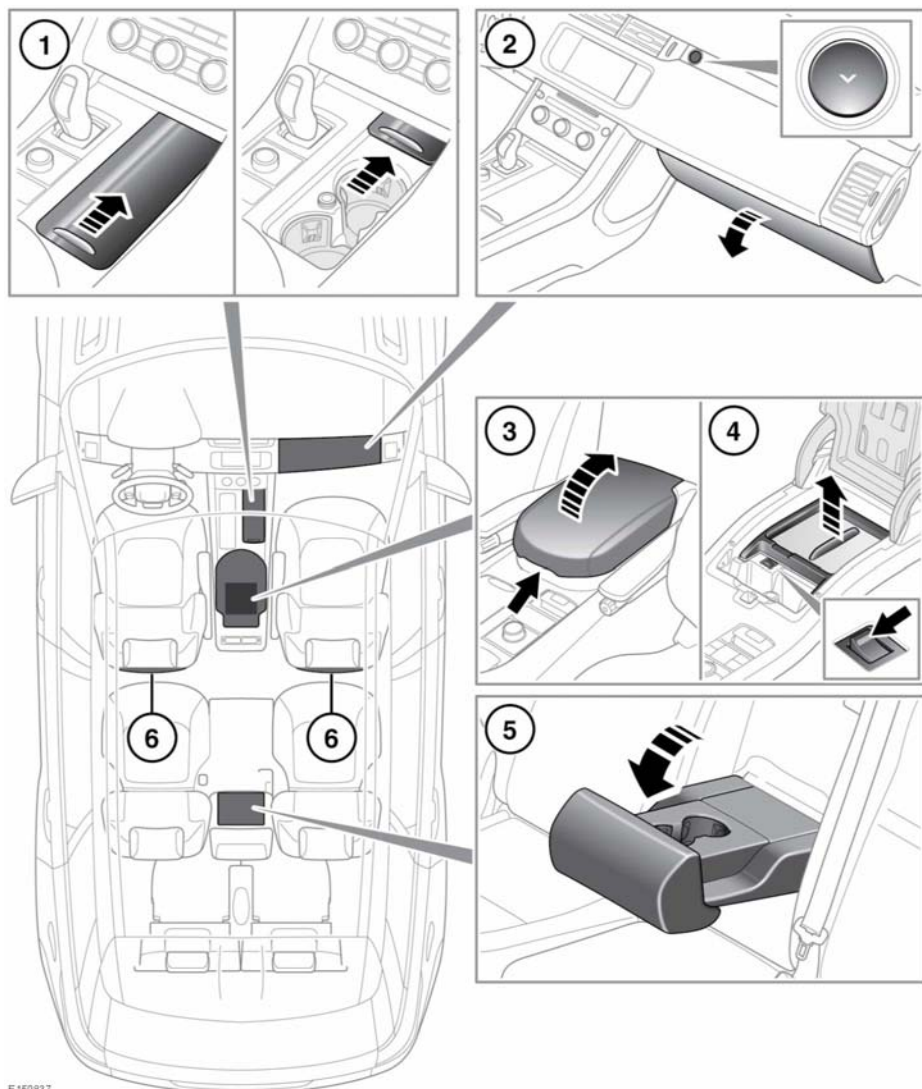


STORAGE COMPARTMENTS



E150837

Storage compartments



Make sure any items stored in the vehicle are secure and cannot move. If the vehicle is involved in an accident, or subject to sudden braking or direction change, loose items can cause serious injury.



Do not drink, or use the cup holders when driving.

1. Front cup holders: Slide open the panel to access. Press and release to close.
2. Glovebox.
3. Centre console storage/cool box.

Note: *The rubber mat at the bottom of the centre console is designed to hold CD cases.*

4. Cool box: Switch on and off using the switch on the inside front lip. There is a short delay between pressing the switch and illumination of the indicator. The cool box will work best when the cooling tray is used.

Note: *The cool box will only operate with the ignition turned on.*



The cool box should be switched off when it is not needed, to preserve battery charge.

5. Rear seat cup holders: Fold the centre armrest down.
6. Map pockets.