

In the event that your personal safety or security is at risk, press and release the button cover to reveal the button. The button will be illuminated by a red LED. Press the button for 2 seconds to call. Your location and the vehicle's details will automatically be provided to the emergency services.

When a call is initiated, the button will flash amber. The button will be constantly illuminated amber during a call.

Push the button cover back into place after use.

Note: In the event that any of the vehicle's airbags are deployed, or a crash is detected, an SOS emergency call will be automatically triggered.

Note: If you are travelling in a different country, a call will still connect, however, the vehicle's location and details may not be automatically sent.

INCONTROL SECURE

InControl Secure provides a stolen vehicle tracking service. In the event that the vehicle has been tampered with, or moved without your consent, you will be contacted by the Secure operating centre. Alternatively, use the InControl Remote Smartphone App, or the phone number on the InControl website, to contact the Secure operating centre.

When the vehicle is being serviced or repaired, InControl must be set to Service mode. This can be done by using the InControl Remote Smartphone App, or via the InControl website.

If the vehicle is being transported, InControl must be set to Transport mode. Again, this can be done by using the InControl Remote Smartphone App, or via the InControl website.

Failure to set to Service mode or Transport mode could trigger a false theft alert.

Note: When set, Service or Transport mode should be updated every 10 hours, or more frequently if required.

Note: For further information, visit the InControl section of www.landrover.com.

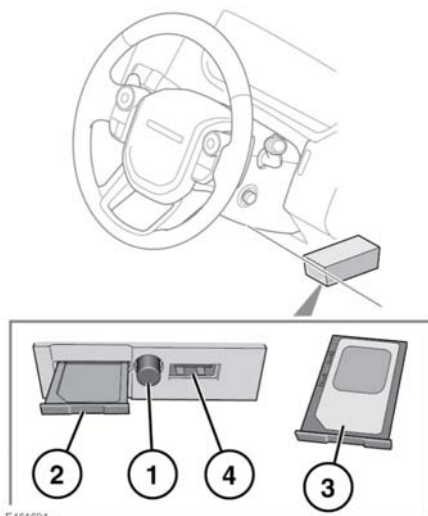
INCONTROL WI-FI

InControl Wi-Fi allows passengers to connect to the internet using a high speed 3G connection.

A SIM card must be inserted into the SIM card holder. The SIM card holder is located under the driver's side of the fascia.

The SIM card reader utilizes a 'Mini-SIM' interface. If your SIM card is a different size, for example, 'Micro-SIM', an adaptor or replacement SIM card will be required.

Note: If your SIM card has previously been used in a mobile phone, or any other device, and a Personal Identification Number (PIN) has been set, remove the PIN before using the SIM card in the vehicle.



E161691