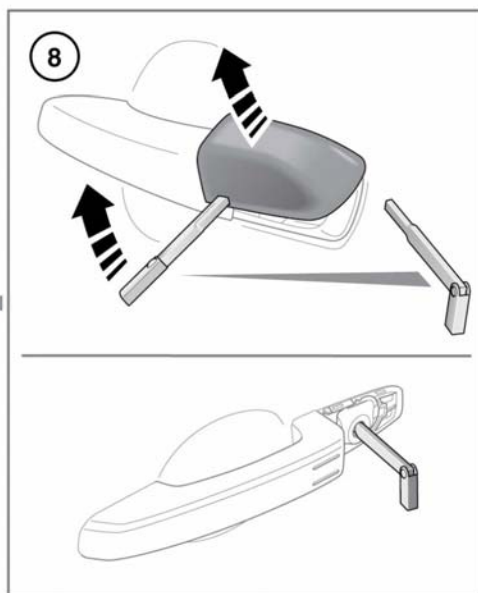
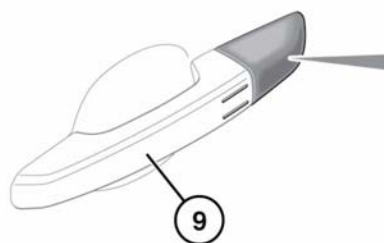
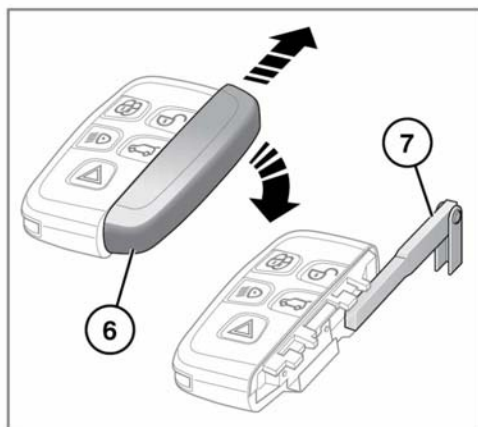
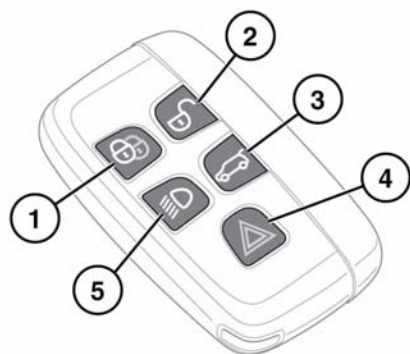


# Entering the vehicle

## UNLOCKING THE VEHICLE



E140776



Any person fitted with an implanted medical device should make sure that the device is kept at a distance of at least 22 cm (8.7 inches) away from any transmitter mounted in the vehicle. This is to avoid any possibility of interference between the system and the device.

Interference may cause the implanted medical device to malfunction, causing serious injury or death. For more information on the locations of the security system transmitters, see 279, **SMART KEY TRANSMITTER LOCATIONS**.



To prevent accidental or unauthorised operation, never leave the Smart key unattended in the vehicle. Never leave children or animals unattended in the vehicle. The vehicle can be operated when the Smart key is inside the vehicle.

**Note:** The operational range of the Smart key will vary considerably depending on atmospheric conditions and interference from other transmitting devices.

**Note:** If any door or the tailgate is locked or unlocked 10 times within a short period, the latch is disabled for approximately 1 minute.

The vehicle is supplied with 2 Smart keys. The Smart keys act as remote controls for the locking and alarm system and allow the vehicle to be locked, unlocked and driven without the use of a conventional key. See 7, **KEYLESS ENTRY**, 13, **KEYLESS LOCKING** and 100, **STARTING THE ENGINE**. Each Smart key also has an emergency key housed in a slide out compartment.

1. Lock:

- Press to secure the vehicle. The vehicle can be Single or Double locked. See 12, **SINGLE LOCKING** and 12, **DOUBLE LOCKING**.

Also see, 13, **GLOBAL CLOSING**.

2. Unlock:

- Press briefly to unlock the vehicle and deactivate the alarm. The hazard warning lamps will flash twice to indicate that the vehicle is unlocked and the alarm has been deactivated. The exterior lamps, interior lamps and approach lamps will illuminate to assist entry to the vehicle. Also see 7, **GLOBAL OPENING**.

3. Tailgate release/stop/reverse direction/close:

- Press briefly to open/close the tailgate. If the vehicle is locked and armed, the perimeter alarm will remain active while the tailgate is open, but intrusion and inclination sensing systems will be disabled for the duration that the tailgate is open.

When closing the tailgate, if the vehicle is already locked and armed, the hazard warning lamps will flash after a few seconds to confirm the full alarm system has been reactivated. There will also be an audible sound if the vehicle was double locked. See 8, **OPENING AND CLOSING THE TAILGATE**.

**Note:** Make sure that the Smart key does not remain in the vehicle before closing. If the vehicle is in an area of localised Radio Frequency (RF) interference or the Smart key is shielded by metal objects, the vehicle may close and lock with no means of opening again.

4. Panic alarm: