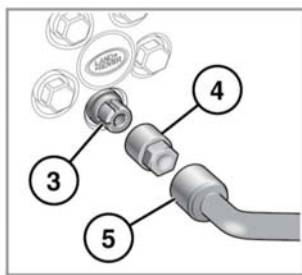
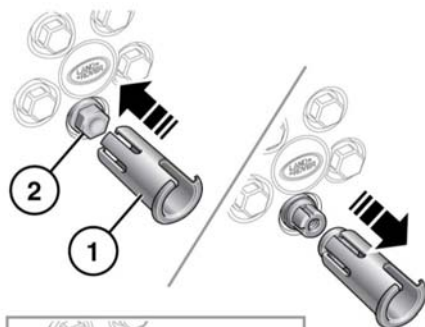


# Wheel changing

## Releasing locking wheel nuts







E135712

1. Push the cover removal tool **1** over the locking wheel nut cover **2**. Make sure that it is fully engaged.
2. Pull the tool squarely away from the wheel to remove the wheel nut cover.
3. Fit the adapter **4** onto the exposed locking wheel nut **3**.
4. Use the wheel brace **5** on the adapter to release the wheel nut.

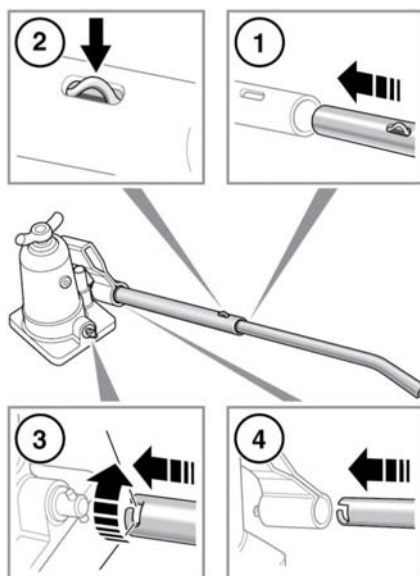
**Note:** If the cover removal tool is inadvertently fitted to a standard wheel nut, it can only be released by removing the wheel nut. The wheel brace will fit inside the cover removal tool and onto the wheel nut.

**Note:** After use, store the wheel nut adapter correctly in the tool kit.

## OPERATING THE JACK

-  **WARNING - THAT NO PERSON SHOULD PLACE ANY PORTION OF THEIR BODY UNDER A VEHICLE THAT IS SUPPORTED BY A JACK.**
-  Ensure that the jack is not positioned over metal gratings or a manhole cover.
-  Ensure that the jack is correctly located onto the vehicle jacking point. Do not use any other position to jack the vehicle.
-  Never use the bottle jack from the side of the vehicle.

Before you position the jack under the vehicle, make sure you are familiar with its operation.



E135713

1. Slot the 2 parts of the jack lever together.
2. Make sure that the spring clip protrudes from the engagement slot.