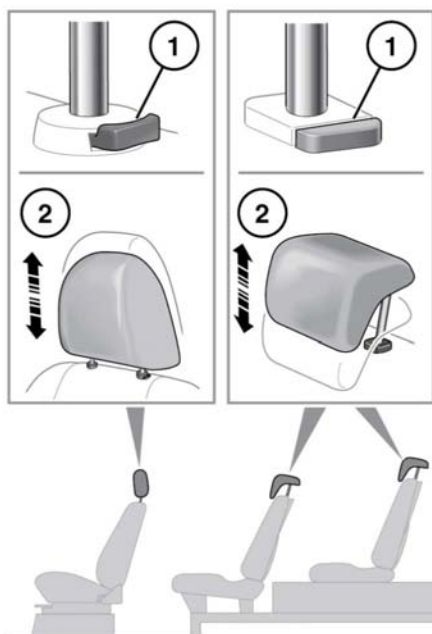





# Head restraints

## HEAD RESTRAINT ADJUSTMENT



E135667

-  **Adjust the head restraint so that the top of the head restraint is above the centre line of the head.**
-  **Do not drive, or carry passengers with the head restraints removed from occupied seats.**
-  **Never adjust the head restraints while the vehicle is in motion.**

1. Squeeze in the locking collar to release the head restraint.
2. Move the head restraint to the required position.

**Note:** It is not necessary to squeeze the locking collar to adjust the head restraint upwards.

If removal is essential, move the head restraint to its highest position then squeeze in the locking collar while lifting the restraint clear of the seat.

To replace the head restraint, engage the guide posts into the collars and press the restraint downwards until a click is heard.

## REAR HEAD RESTRAINT REMOVAL

 **Always store a removed head restraint securely.**

It is possible to remove the rear head restraints, if necessary, to enable the fitment of a child restraint, or folding the seat, as follows:

- Raise the head restraint to its uppermost position and press the locking collar.
- Lift the head restraint out of the seat.

Make sure the head restraint is fitted once the child seat is removed or the seat is restored to the seating position.