

Heating and ventilation

Press a switch to operate. The LED will illuminate.

Press again to switch off.

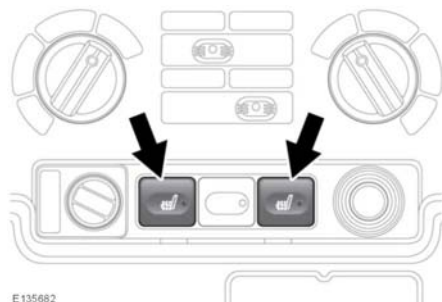
The heating elements in the front screen will switch off automatically after approximately 8 minutes.

For maximum effect when defrosting/demisting, use these settings:

- Air distribution to windscreen only.
- Temperature to maximum.
- Blower speed to position **3**.
- Set recirculation to fresh air.
- Press the A/C switch.

Note: The heated windscreen operates only while the engine is running.

HEATED SEATS



Note: To prevent the battery from becoming discharged the seat heaters should be operated only when the engine is running.

With the starter switch at position **II**, press the appropriate switch to activate a seat heater. The seat heaters will maintain a factory set temperature. There are indicators in each switch.

Press again to turn off.