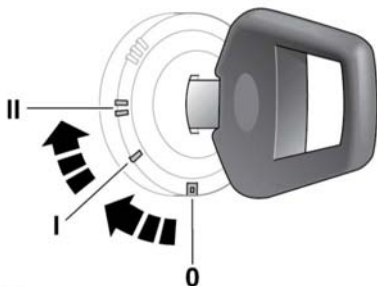


Entering the vehicle



E135658

1. Remove the remote control from the key ring and keep it well away from the starter switch.
2. Unlock the driver's door, enter the vehicle and close the door.

Note: When the door is opened the alarm will sound for 30 seconds.

3. Insert the key into the starter switch and turn to position **II** until the alarm sounds again.
4. Turn the key to position **0** then open and close the driver's door.
5. Enter the first part of the EKA code by turning the key to position **II** then back to position **0** the same number of times as the EKA number. For example: if the number is 4, turn the key to position **II** and back to position **0**, 4 times.
6. Open and close the driver's door to confirm the entry.
7. Follow the same procedure to enter the next 3 numbers.

When the code is entered correctly, the alarm indicator in the instrument pack will extinguish, the alarm will be disarmed and the engine will re-mobilise.

If the code is entered incorrectly, the alarm indicator will continue to illuminate and the engine is still immobilised.

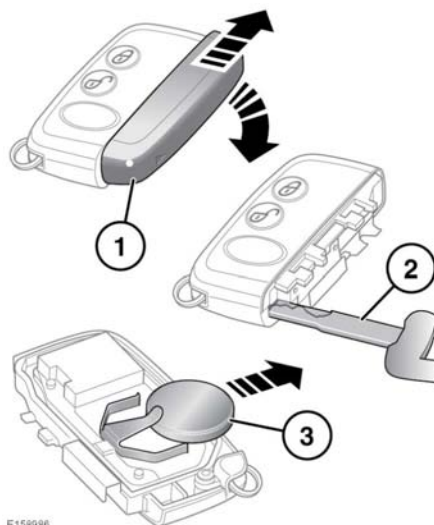
Before starting the process again, turn the key to position **II** and hold it for 5 seconds to reset.

After 3 failed attempts the security system invokes a delay period of 30 minutes, during which time a further attempt to enter the EKA code will not be accepted.

REMOTE KEY FOB BATTERY REPLACEMENT

When the battery is due for replacement the following symptoms will be apparent:

- The remote control will work only with a second press of the unlock button.
- The indicators will not flash when the alarm is disarmed.
- Alarm indicator in instrument pack continues to flash rapidly after initial 10 second period of rapid flashing.



E158986

To replace the battery:

1. Remove the cover by sliding it in the direction of the arrows.

2. Use the key blade of the black key to separate the Key fob body.
3. Fit a new and unused CR2032 type battery (available from a Dealer/Authorised Repairer) with the positive (+) side upwards.

Note: Avoid touching the new battery.

Moisture/oil from fingers can reduce battery life and corrode the contacts.

Note: If the low battery warning does not extinguish, this indicates that the replacement battery is not in a new and unused condition.

Refit the parts in reverse order, ensuring that they click securely into place.



Battery disposal: Batteries contain harmful substances and must be disposed of correctly. Seek advice on disposal from a Dealer/Authorised Repairer and/or your local authority.