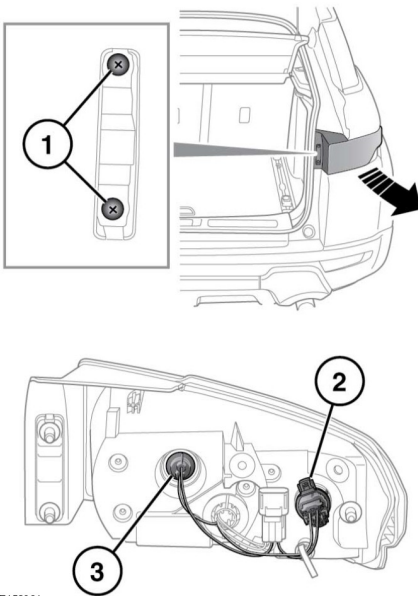


Removing the right side bulb:

To gain more room for accessibility, follow the process for moving the right side headlamp unit.

At the back of the headlamp unit, remove the indicator bulb housing, turn it counter clockwise to release.

REAR DIRECTION INDICATOR AND REVERSING LAMP BULB REPLACEMENT



E150361

1. Remove the 2 fixings.
2. Direction indicator:
 - To remove the bulb holder, press in the outer wings on the black plastic unit and pull the holder free of the housing.
 - Push in the release mechanism while pulling the connector and bulb holder apart.








- Refitting is a reverse of the removal process. Make sure the connector lock is pressed down and that the bulb unit locates securely into the fog lamp housing.

Note: Inside the bulb holder are three locating lugs. When fitting the new bulb unit, the lugs must align correctly to the connector.

3. Reversing lamp:

Turn the bulb holder counter clockwise and pull to remove it from the lamp unit. Grip the holder then press the bulb into the holder and turn counter clockwise to release the bulb. Pull the bulb up to remove.

REAR FOG LAMP BULB REPLACEMENT

-  Always find a safe place to stop, off the highway and away from traffic.
-  Apply the parking brake. Engage Park (P) on automatic vehicles, select 1st or reverse gear on manual vehicles.
-  Switch on the hazard warning lamps.
-  Place a warning triangle at a suitable distance behind the vehicle, facing towards oncoming traffic.
-  Disconnect trailer/caravan from vehicle.
-  Make sure all passengers, and animals, are out of the vehicle and in a safe place away from the highway.
-  If the vehicle has been driven recently, do not touch exhaust system components until they have cooled.