







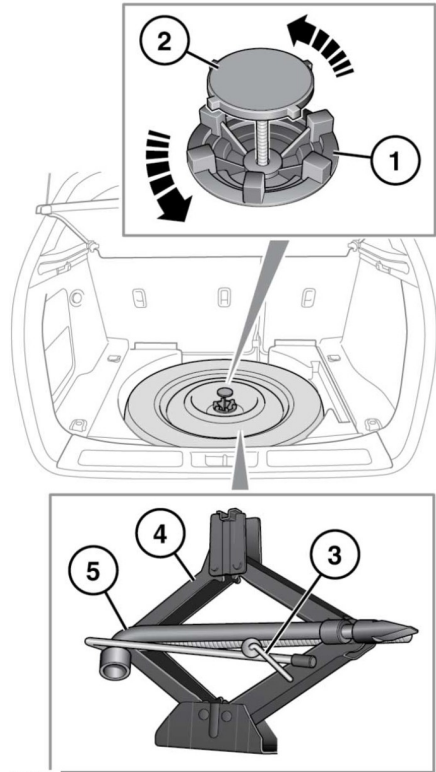


## WHEEL CHANGING SAFETY

Before raising the vehicle or changing a wheel, make sure you read and comply with the following warnings.


-  **Always find a safe place to stop, off the highway and away from traffic.**
-  **Make sure the vehicle is on firm level ground.**
-  **Apply the parking brake. Engage Park (P) on automatic vehicles, select first or reverse gear on manual vehicles.**
-  **Switch on the hazard warning lamps.**
-  **Make sure the front wheels are in the straight ahead position and engage the steering lock.**
-  **Disconnect a trailer/caravan from the vehicle.**
-  **Make sure all passengers, and animals, are out of the vehicle and in a safe place away from the highway.**
-  **Place a warning triangle at a suitable distance behind the vehicle, facing towards oncoming traffic.**

## TOOL KIT



E156391

1. Temporary spare wheel locking ring.
2. Temporary spare wheel retaining bolt.
3. Tool kit retaining bolt.
4. Jack.
5. Wheel brace.

 **After use, the tools and jack should be returned to the storage area and correctly stowed.**

**Note:** *Examine the jack occasionally, clean and grease the moving parts, particularly the screw thread, to prevent corrosion.*