

E150257

1. On the driver's door, press the memory store button to activate the memory function. The switch indicator will illuminate.
2. Press one of the preset buttons within 5 seconds to memorise the current settings. **Memory (1, 2 or 3) Settings Saved** will be displayed on the Message centre, accompanied by an audible chime to confirm the settings have been saved to memory.

Note: A seat position will be saved to memory only during the 5 second active period.

Note: Any existing settings will be over-written when a new position is saved to memory.

To recall a saved position, press the relevant preset button (2). **Memory (1, 2 or 3) Recalled** will be displayed in the Message centre.

Coupe passenger seat

Saving a seat position to memory follows the same procedure as for the driver's seat. Press the memory button to store the current seat settings.

EASY ENTRY/EXIT

When Easy entry/exit is enabled, the driver's seat will automatically lower when the ignition is switched off and the door is opened. Upon returning to the vehicle, when the driver's door is closed and the ignition is turned on, the seat will return to its previously set position.

This feature can be enabled/disabled via the Instrument panel menu. See **40, INSTRUMENT PANEL MENU**.

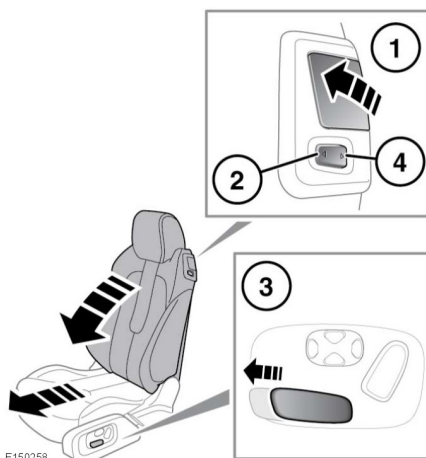
REAR SEAT ACCESS

The front seats tilt and power slide forwards for entry to and exit from the rear seats.



Take care not to damage the seatbacks while gaining access to the rear seats.

Standard seats



E150258

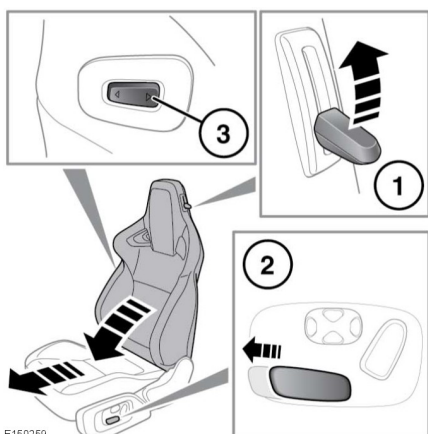
1. Lift the locking lever and pivot the seatback forwards.
2. Push the switch forwards or use the side mounted switch (3) to power slide the seat forwards.

Front seats

3. To return the seat, pivot the seatback until it locks into its previous position. Push the switch (4) rearwards until the seat stops at its previous position.

Note: The previous position can be a memory position or an adjusted position. If the seat is required to move further back and there is still adjustment available, press and hold the switch (3 or 4) again.

Sports seats



E150259

1. Lift the locking lever and pivot the seatback forwards.
2. Push the side mounted switch to power slide the seat forwards.
3. To return the seat, pivot the seatback until it locks into its previous position. Push the switch rearwards until the seat stops at its previous position.

Note: Previous position can be a memory position or an adjusted position. If the seat is required to move further back and there is still adjustment available, press and hold the switch (2 or 3) again.