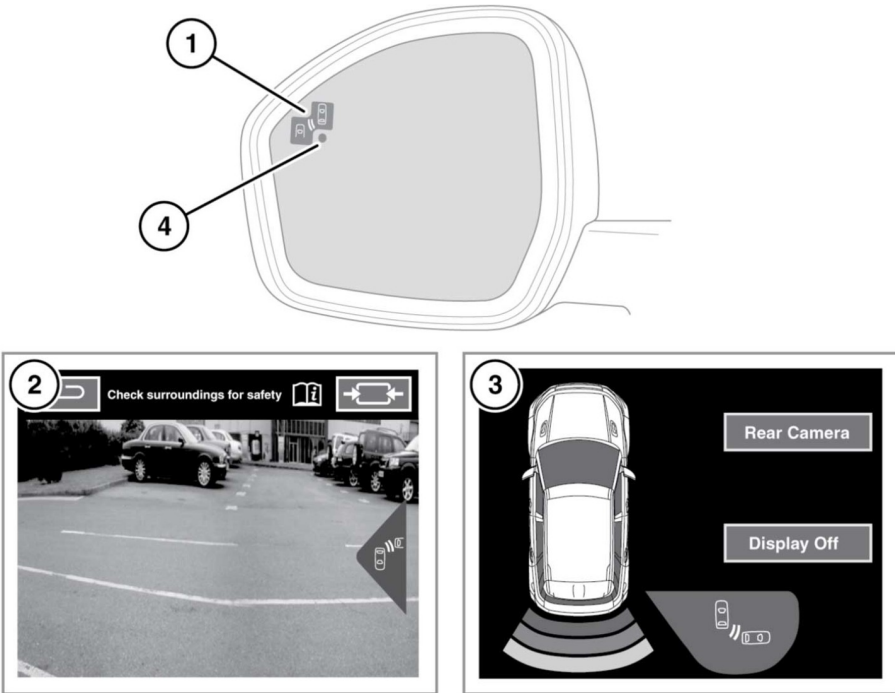


## REVERSE TRAFFIC DETECTION



E154980



**The Reverse Traffic Detection (RTD) system is a supplement to, not a replacement for, safe driving, good observation and use of the exterior and rear-view mirrors.**

**Note:** RTD is automatically disabled when a trailer is connected and when Park assist is active.

In addition to the functionality provided by the rear view camera, the RTD system provides a warning to the driver of any moving vehicle, at either side, that may pose an accident risk during a reversing manoeuvre.

An amber warning icon (1) will flash in the relevant exterior mirror and an audible warning will be emitted to indicate the presence of a moving vehicle. The rear view camera screen (2) or the parking aid screen (3) will also show a warning on the relevant side(s) of the screen. To switch between the rear view camera and the parking aid screen, touch the camera image or the **Rear camera** icon accordingly.

The system can be enabled or disabled via the Instrument panel menu. See **40, INSTRUMENT PANEL MENU**. When RTD is disabled, an amber dot (4) will be displayed in both exterior mirrors.