



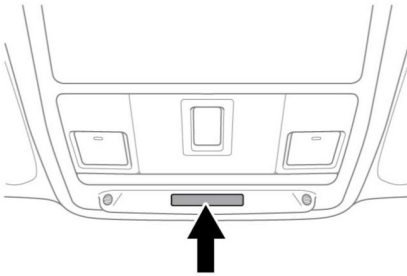
Do not use a child restraint on a seat protected by an operational airbag in front of it. Doing so presents a high risk of death or serious injury to the child in the event of an accident.



Do not fit a child restraint to the front passenger seat if the SRS warning light illuminates continuously with the ignition on.

Note: The passenger airbag must be disabled when a rearward facing child restraint is fitted to the front passenger seat.

Airbag disable/enable is achieved via the **Vehicle Set-up** menu on the Instrument panel. See **40, INSTRUMENT PANEL MENU**.



E155462

An airbag status indicator lamp, mounted on the overhead control panel (as illustrated), will display the operational status of the passenger airbag.

If the airbag is disabled, the status indicator will display **PASSENGER AIRBAG OFF**. If the airbag is enabled the status indicator will display **ON PASSENGER AIRBAG** for the first 60 seconds of a journey or at a change of status.



When checking the operational status of the front passenger airbag, make sure the ignition is switched on and the warning lamp bulb check period of 8 seconds has elapsed.



As soon as the child seat is removed from the front passenger seat, the airbag must be turned on. Failure to do so will put any front seat passengers at greater risk of death or serious injury in the event of an accident.

FRONT AIRBAGS

The front passenger and driver airbags are able to deploy in 2 stages, depending on the severity of the frontal impact. In a severe impact, the airbags inflate fully to stage 2 giving maximum protection. In a lesser impact, full inflation may not be required, so the airbags will only inflate to stage 1. The knee bolster airbag will always fully inflate.

SIDE AIRBAGS

These are designed to protect the thorax region of the torso and will deploy only in the event of a side impact and then, only on the side of the impact.

CURTAIN AIRBAGS

The curtain airbags are deployed in side impact and rollover events, providing greater protection from serious head injuries.

AIRBAG DEPLOYMENT EFFECTS



When an airbag inflates, a fine powder is released. This is normal and not an indication of a malfunction. The powder may cause irritation to the skin and should be thoroughly flushed from eyes and any cuts or abrasions. If breathing difficulty is experienced, leave the vehicle if possible or open the windows or doors to allow fresh air in.