

BATTERY WARNING SYMBOLS



Do not allow naked flames or other sources of ignition near the battery, as the battery may emit explosive gases.



Make sure when working near or handling the battery, suitable eye protection is worn, to protect the eyes from acid splashes.



To prevent risk of injury, do not allow children near the battery.



Be aware that the battery may emit explosive gases.



The battery contains acid which is extremely corrosive and toxic.



Consult the handbook for information, before handling the battery.

BATTERY CARE



If battery electrolyte comes into contact with your eyes, skin, or clothes you should remove the affected clothing and flush the skin/eyes with large amounts of clean water. Seek medical assistance immediately.



If swallowed, battery electrolyte can be fatal, seek medical assistance immediately.



Do not connect any 12 volt equipment directly to the battery terminals. Doing so may cause a spark, which can result in an explosion.



The cell plugs and vent pipe must be in place at all times when the battery is connected to the vehicle. Make sure the vent pipe is clear of obstructions and not kinked. Failure to do so may cause a pressure build up in the battery, resulting in an explosion.



Do not expose the battery to a naked flame or spark as the battery produces explosive, flammable gas.



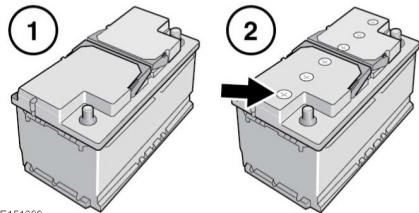
Never jump start (boost), charge, or try to start a vehicle with a frozen battery. Doing so can result in an explosion.



Remove all metal jewellery before working on, or near, the battery, and never allow metal objects or vehicle components to come into contact with the battery terminals. Metal objects can cause sparks, and/or short circuits, resulting in an explosion.



Do not allow the battery posts or terminals to come into contact with your skin. They contain lead and lead compounds which are toxic. Always wash your hands thoroughly after handling the battery.



E151699

Your vehicle is fitted with either an Absorbed Glass Matt (AGM) (1) battery or a low maintenance (2) battery.

Note: AGM batteries are sealed for life and require no maintenance.