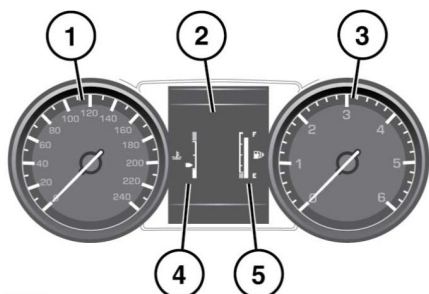


# Instrument panel

## INSTRUMENT PANEL



E155410

1. Speedometer.
2. Message centre.
3. Tachometer.
4. Temperature gauge: If the temperature gauge pointer moves into the red section at the top of the scale, the engine is overheating. Stop the vehicle as soon as safety permits and allow the engine to idle until the temperature reduces. If, after several minutes, the temperature does not reduce, switch off the engine and allow to cool. If the problem persists, seek qualified assistance immediately.

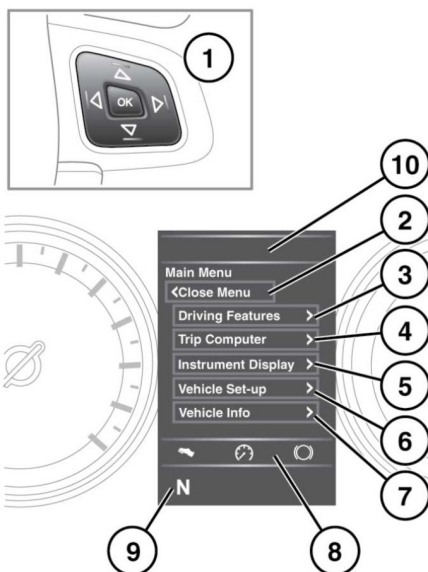
⚠ Serious engine damage can occur if the vehicle is driven while the engine is overheating.

**Note:** If engine overheating occurs, there may be a noticeable reduction in engine power and the air conditioning may cease operation. This is a normal operating strategy, to reduce load on the engine and assist with cooling.

5. Fuel gauge: See **45, LOW FUEL WARNING (AMBER)**.

⚠ Never allow the engine to run out of fuel. The resultant misfire can seriously damage the catalytic converter.

## INSTRUMENT PANEL MENU



E155411

A number of vehicle features and display settings may be configured via the Instrument panel menu.

To display and navigate through the Instrument panel menu, operate the menu control on the steering wheel.

1. Steering wheel menu control.
  - Press the up/down arrows to scroll through a list. The current selection will be highlighted.
  - Press the right arrow to view a sub list.
  - Press the left arrow to return to the previous menu.
  - Press the **OK** button to select the highlighted item.
2. Select **Close Menu** to close and return to **Main Menu**.