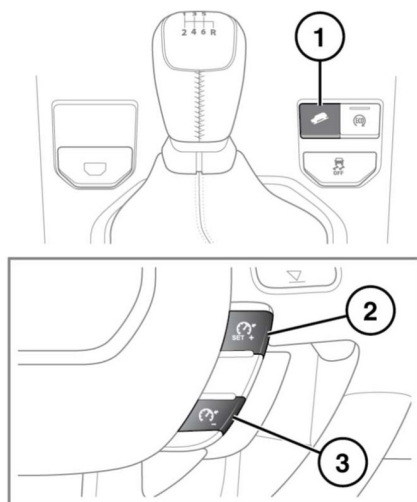


HDC CONTROLS



E154101

Hill Descent Control (HDC) is designed to restrict the vehicle's speed to a set limit when travelling downhill.



Do not attempt a steep descent if HDC is inoperative or warning messages are displayed.

1. **HDC on/off:** HDC can be selected at any speed, but will only operate at speeds less than 50 km/h (31 mph).

For vehicles with an automatic gearbox, the HDC can be used in Drive (**D**), Reverse (**R**) and all the CommandShift™ gears. When in **D**, the vehicle will select the most appropriate gear.

For vehicles with a manual gearbox, the HDC can be used in 1st, 2nd and reverse gears.

Note: HDC is automatically selected by some of the Terrain Response special programs.

Note: HDC is automatically deselected if the ignition is switched off for more than 6 hours.

If the system operation criteria have not been met, the HDC warning lamp will flash to indicate that the system has been selected but is not operating. See **45, HILL DESCENT CONTROL (GREEN)**.

A graphic will also be displayed in the Message centre showing the HDC target speed. When HDC is unable to operate, the display will be grey. The graphic indicates the range of target speeds available in the currently selected gear.

If HDC is deselected while operating, the warning lamp will extinguish and the system will fade out, allowing the vehicle's speed to gradually increase.

If HDC is already selected and the vehicle's speed exceeds 50 km/h (31 mph), HDC is suspended. The HDC indicator will flash and a message will appear in the Message centre.

If the brake pedal is pressed when HDC is active, a pulsation might be felt through the brake pedal. When the brake pedal is released, HDC will resume.

2. **Increase the descent speed:** The Cruise control (+) button will increase the HDC descent speed in 1 km/h (0.6 mph) increments. Press and hold the (+) button for larger incremental increases, up to the maximum permissible target speed.

Note: Each gear has a predetermined maximum speed.

Note: The vehicle's speed will only increase on a slope steep enough to increase momentum. Use of the (+) switch may therefore not increase the vehicle's speed on a gentle slope.