

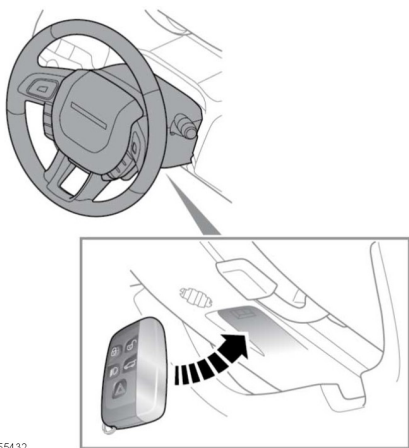
Starting the engine

KEYLESS START BACKUP

If the vehicle has been unlocked using the emergency key blade or the Smart key is not detected by the vehicle, it will be necessary to use the Keyless start backup to disarm the alarm and start the engine.

The Keyless start backup can only be used when one of the following messages is displayed in the Message centre;

- Smart Key Not Found. Position As Shown And Press Start Button
- Reposition Smart Key And Press Start Button
- Wrong Smart Key



E155432

1. Position the Smart key flat against the underside of the steering column with the buttons facing downwards.

Note: The steering column has markings on the side to aid placement of the Smart key.

2. Automatic transmission: Press the brake pedal firmly.
Manual transmission: Press the clutch pedal firmly.

3. Press and release the engine **START/STOP** button.

Once the engine has started, the foot pedal can be released if it is safe to do so.

If the Smart key is not recognised, or the engine still fails to start, consult a Dealer/Authorised Repairer.