

## Entering the vehicle

4. Close the tailgate, then open again to check that it opens to the programmed height.

**Note:** If, after performing part 3 of the process the tailgate closes automatically, the required height has not been set. Repeat the process making sure that all steps are adhered to.

To reset the maximum opening height, repeat the process, but when the tailgate reaches its current programmed height, manually move it to the fully open position before pressing and holding the button.

The powered tailgate may lose its position memory if there are multiple object detections or if the battery voltage is low. Powered operation may be inhibited.

To reset the tailgate:

1. Manually close the tailgate.
2. Press a release switch.
3. Allow the tailgate to power fully open or to the previously set position.
4. Press and release the close switch.
5. Allow the tailgate to power close fully. The tailgate programmed memory will now be restored.

## DRIVE-AWAY LOCKING

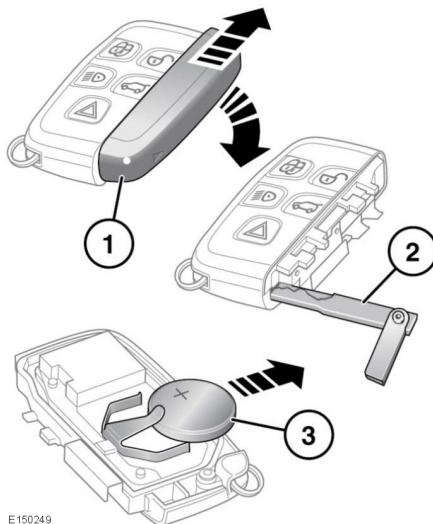
Drive-away locking automatically locks all doors at a set speed when the vehicle is in motion.

This feature can be enabled/disabled via

**Drive-away locking** in the **Vehicle set-up** menu. See **40, INSTRUMENT PANEL MENU**.

## SMART KEY BATTERY REPLACEMENT

When the battery needs replacing, there will be a significant decrease in the effective range and **SMART KEY BATTERY LOW** will be displayed in the Message centre.



E150249

To replace the battery:

1. Remove the cover by sliding in the directions of the arrows.
2. Use the emergency key blade to separate the Smart key body.
3. Fit a new and unused CR2032 type battery (available from a Dealer/Authorised Repairer) with the positive (+) side upwards.

**Note:** Avoid touching the new battery. Moisture/oil from fingers can reduce battery life and corrode the contacts.

**Note:** If the low battery warning does not extinguish, this indicates that the replacement battery is not in a new and unused condition.

Refit the parts in reverse order, making sure that they click securely into place.